

SYDNEY CENTRAL PLANNING PANEL PANEL DETERMINATION MEETING

SCPP No	2018SCL005
DA Number	DA-13/135/07
Local Government Area	Bayside Council
Proposed Development	Section 4.56 (formerly Section 96AA) Application to modify Development Consent No. 13/135 to delete two rooftop pergolas, amend the building facade of the approved mixed use development and modify conditions of consent.
Street Address	659, 661-663 & 669 Gardeners Road, Mascot
Applicant	Dedico Development Service
Owner	Mascot Circle Pty Ltd
Number of Submissions	Nil
Regional Development Criteria (Schedule 4A of the Act)	Section 4.56 Application to modify a consent determined by the NSW Land and Environment Court, pursuant to Clause 21 of State Environmental Planning Policy (State and Regional Development) 2011
List of All Relevant s4.15(1)(a) Matters (previously Section 79C)	<ul style="list-style-type: none"> • List all of the relevant environmental planning instruments: s4.15(1)(a)(i) <ul style="list-style-type: none"> ○ State Environmental Planning Policy No. 65 – Design Quality of Residential Apartment Development; ○ Botany Bay Local Environmental Plan 2013. • List any proposed instrument that is or has been the subject of public consultation under the Act and that has been notified to the consent authority: s4.15(1)(a)(ii); <ul style="list-style-type: none"> ○ Nil • List any relevant development control plan: s4.15(1)(a)(iii); <ul style="list-style-type: none"> ○ Botany Bay Development Control Plan 2013. • List any relevant planning agreement that has been entered into under section 7.4, or any draft planning agreement that a developer has offered to enter into under section 7.4: s4.15(1)(a)(iiia); <ul style="list-style-type: none"> ○ Nil • List any coastal zone management plan: s4.15(1)(a)(v) <ul style="list-style-type: none"> ○ Nil • List any relevant regulations: s4.15(1)(a)(iv) eg. Regs 92, 93, 94, 94A, 288 <ul style="list-style-type: none"> ○ Nil

List all documents submitted with this report for the panel's consideration	<ul style="list-style-type: none"> • Fire Safety Engineering Report- Defire • Qualitative Wind Impact Assessment- SLR • Architectural Plans- Nettleton Tribe • S96AA Report- Dedico Development Services
Report by	Angela Lazaridis – Senior Development Assessment Officer

RECOMMENDATION

It is RECOMMENDED that the Sydney Central Planning Panel resolve pursuant to Section 4.56 (formerly Section 96AA) of the Environmental Planning and Assessment Act 1979, to modify Development Consent No. 13/135 at 659, 661-663 & 669 Gardeners Road, Mascot, as indicated within the updated Schedule of Conditions.

EXECUTIVE SUMMARY

Development Application No. 13/135 was approved by the Land and Environment Court on 21 August 2014 for a mixed use residential and commercial development comprising, in its approved form, 328 apartments and approximately 955sqm of commercial space at 659-669 Gardeners Road, Mascot.

The application had been refused by the former Sydney East Region Planning Panel (the Panel) on 4 June 2014 for the following reasons:

1. *The proposed exceedence in building height and FSR results in a building envelope with unacceptable impacts within the site.*
2. *The non-compliance with the requirement of SEPP 65 in terms of building separation, solar access and building depth is unacceptable.*
3. *The variation in urban form, from that proposed in the DCP results in unacceptable impacts in adjoining lands and the future public domain.*
4. *There is insufficient separation between living areas and bedrooms off the "streets in the sky" results in inadequate residential amenity.*

The application proceeded to a former Section 34 hearing in which it was approved after amended plans were received. The site has had a number of section 4.56 applications approved with the most recent application approving a total FSR of 3.83:1 (DA-13/135/05).

On 21 December 2017, the applicant lodged the subject Section 4.56 Application to modify certain aspects of the approved development relating to the deletion of two rooftop pergolas amend the building facade of the approved mixed use development and modify conditions of consent.

The application was placed on public exhibition and was advertised under the *Environmental Planning and Assessment Regulation* for a fourteen (14) day period from 15 January to 1 February 2018. No submissions were received.

Key points that are discussed relate to deletion of the open rooftop pergolas being removed to address fire safety concerns due to their proximity to smoke ventilators located on the rooftop. Additionally, the wind assessment report has been updated to reflect the balustrading that was approved in previous modifications, and minor external changes to the façade of both

buildings have been proposed to either align with the approved floor plans in previous modifications or to address fire safety.

The application does not significantly alter the approved building. The modification is considered to be substantially the same development is not considered to create any likely impacts to the surrounding development.

The Section 4.56 Application has been assessed in accordance with the relevant requirements of the *Environmental Planning and Assessment Act 1979* and is recommended for approval.

BACKGROUND

The subject site is located on the southern side of Gardeners Road between the intersections of Bourke Road and Kent Road. The site will be bounded by the future construction of Galloway Street to the south which will run through the southern portion of the site. The site consists of three separate allotments, which when amalgamated will have a combined 78.5 metre frontage to Gardeners Road and a site area of 8,756.8msqm.

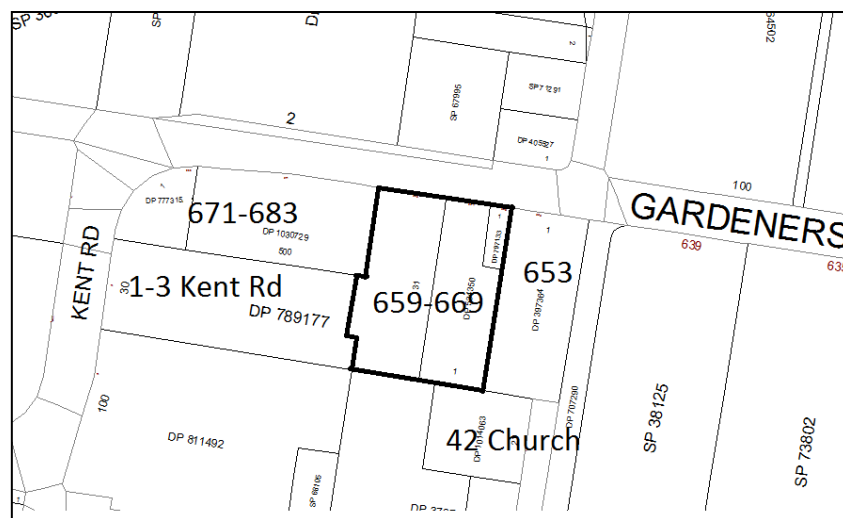


Figure 1. Locality Plan



Figure 2. Aerial Map of subject site

Council received Development Application No. 13/135 on the 2 August 2013, which originally sought consent for a mixed use development comprising the following:

- Demolition of existing buildings, site works and remediation.
- Construction of one x 9-storey mixed use building (Northern Tower) and one x 13-storey residential flat building (Southern Tower) with a total floor space ratio of 3.22:1 and a maximum building height of 45.5 metres providing: A total of 309 residential apartments; 2,637sqm of commercial premises; basement and at grade parking for 427 vehicles;
- Dedication of new public land with a total area of 795sqm for the planned construction of Galloway Street; Embellishment of the public domain along Gardeners Road and Galloway Street frontages; and
- Amalgamation of three existing lots into one allotment and Torrens stratum subdivision.

The development application was amended on 14 April 2014 as follows:

- Demolition of existing building, site works and remediation;
- Construction of one x 12-storey mixed use building (Northern Tower) and one x 13-storey residential flat building (Southern Tower) with a total floor space ratio of 3.34:1 and a maximum building height of 45.5 metres providing: A total of 337 residential apartments; 980sqm of commercial/retail floor space to Gardeners Road; one level of basement, one level at grade and one level of podium car parking for 485 vehicles;
- Dedication of new public land with a total area of 795sqm for the future construction New Road (Galloway Street); embellishment of the public domain along Gardeners Road and Galloway Street frontages; and
- Amalgamation of three existing lots into one allotment and Torrens stratum subdivision.

The Applicant on 31 March 2014 lodged a Class 1 proceedings in the Land and Environment Court (No: 10196 of 2014) against the deemed refusal of the application to preserve the appeal rights. Call-over was 30 April 2014, where it was agreed that the matter be adjourned until the 6 June 2014 pending the outcome of the former JRPP determination.

A report was prepared by Council to the Panel, recommending that a deferred commencement consent be granted in order to resolve the matters of stormwater, vehicle access and service to the site, as well as other matters that related to the existing right of way and the construction of the Galloway Street.

On 4 June 2014, the Panel refused the application on the following reasons:

1. *The proposed exceedence in building height and FSR results in a building envelope with unacceptable impacts within the site.*
2. *The non-compliance with the requirement of SEPP 65 in terms of building separation, solar access and building depth is unacceptable.*
3. *The variation in urban form, from that proposed in the DCP results in unacceptable impacts in adjoining lands and the future public domain.*
4. *There is insufficient separation between living areas and bedrooms off the “streets in the sky” results in inadequate residential amenity.*

The Section 34 Conference was held on 26 June 2014 and presided over by Commissioner Pearson. The Section 34 Conference was adjourned for six weeks for the Applicant to provide amended architectural plans. Amended plans and documentation were received on 24 July

2014. The Section 34 Agreement was filed and dated on 18 August 2014 and Court Orders were issued on 21 August 2014. The appeal was upheld.

APPROVED DEVELOPMENT

The development was approved by the Land and Environment Court on 21 August 2014. In its approved form, the development is for the:

- Demolition of the existing buildings, site works and remediation;
- Construction of one x 12 storey mixed use building (Northern Tower) and one x 13 storey residential flat building (Southern Tower) with a total floor space ratio of 3.34:1 and a maximum height of 45.5 metres (RL 51.0m). The development will have a total of 328 residential apartments; 955sqm of commercial premises; basement and 505 car parking spaces at Stage 1 construction being reduced to 481 car parking spaces at Stage 2;
- Dedication of new public land with a total area of 795sqm for the planned construction of Galloway Street; embellishment of the public domain along Gardeners Road and Galloway Street frontages;
- Amalgamation of three existing lots into one allotment and Torrens stratum subdivision.

The most recent approved Section 4.56 application (DA-13/135/04) approved an FSR of 3.36:1, height was unchanged, 1,070sqm of commercial space and no change in the approved number of car parking.

PREVIOUS MODIFICATIONS

Five previous Section 4.56 Applications have been considered by the former JRPP/SCPP. Details relating to the five modifications are provided below:

- DA-13/135/02- Application was approved on 17 November 2015 correcting an error with the calculation of the Section 7.11 Contributions; and
- DA-13/135/03- Application was approved on 24 November 2015, amending the wording of various conditions to allow the approved development to be constructed in stages, with separate Construction Certificates to be issued for each of the following stages:
 - Site Establishment/Shoring/Excavation;
 - Footings/In-ground Services/Structure;
 - Façade/Services/Finishes; and
 - External Works.

Notwithstanding the issuing of the four separate Construction Certificates, the development will continue to be constructed in two stages. The first stage (northern building/stage) has access off Gardeners Road. The second stage (or southern stage) is approved to follow when the New Street to the south (Galloway Street) is constructed, with access off Galloway Street.

- DA-13/135/04- Application was approved on 5 October 2016 to amend the consent to include the following:
 - Increase the size of the southern commercial units thereby increasing the total GFA by 238sqm and shift the construction of the commercial tenancies from Stage 2 to Stage 1 of the construction works;

- Amend the construction staging so that the car parking spaces in Stage 1 were reduced by 24 spaces. However the total number of car spaces at the end of Stage 2 remain unchanged;
 - Various design amendments including revisions to the northern lobby and adjacent commercial tenancies, changes to the amenities area of the northern and southern commercial tenancies, reduction and modification of a number of balconies to accommodate requirements for a substation and changes to the fire egress of the southern building;
 - Amend the Level 2 podium landscaping as a result of the design changes and changes to the fire egress; and
 - Amend Condition No. 34 relating to stormwater management to reflect the details in the amended stormwater plans.
- DA-13/135/05- Application was approved on 1 June 2017 to amend the consent to include the following:
 - Design amendments to the buildings including modifications to the eastern, western and southern elevations to include spandrels and fixed glass louvres, increase in balcony sizes to a number of units to increase articulation of the southern façade of the northern building and the northern façade of southern building, amendments to the location of columns;
 - Deletion of the planter beds at the end of the corridor which results in the reduction of 209sqm landscaped area;
 - Amend unit type 2.7, located on Level 5 involving the removal of the entry indent to 16 units and will increase the residential GFA by 32sqm;
 - Inclusion of the corridors within GFA raising the approved GFA to 3.83:1;
 - Deletion of solar panels from the roof;
 - Deletion of the requirement to paint the car park ceiling white; and
 - Amend Condition Nos. 1, 13(c), 37, 56, 63(b) and 130.
 - DA-13/135/06- Application was approved on 24 August 2017 to amend the consent to include the following:
 - Changes to the lift on the southern building to provide access to the rooftop terrace, resulting in an increase in the height of the southern building to RL 52.2m AHD, but only in relation to the lift overrun.
 - Deletion of the perimeter landscaping, outside the balustrade, on the rooftop terrace.
 - Changes to the glass roof shape (lowered) to both the North and South Tower to comply with the requirements of the fire engineering report.
 - Changes to the approved Reference Document Qualitative Wind Impact Assessment prepared by SLR date 29 July 2013.
 - Amend Condition Nos. 1, 15A and 130 of the consent.

ASSESSMENT OF PROPOSED MODIFICATIONS

An assessment of the modifications is as follows:

Modification No. 1- Deletion of the two rooftop pergolas

The proposed modification relates to the removal of the rooftop open pergolas on both the northern and southern towers. The omission of the rooftop pergolas is required to address fire safety. The approved development required landscaping and future plant growth along the

pergolas. A fire safety engineering report prepared by Defire Innovative Fire Safety was submitted with the application. The report supported the removal of the pergolas as pergolas and climbing plants have the potential to obstruct the flow of smoke to the closest ventilators where it is not managed adequately. It also has the potential to ignite as hot smoke is ventilated from the building. The omission of the roof pergolas located adjacent to the smoke ventilators is considered to minimise this risk. Appropriate performance solutions have been provided within the report. The open pergolas did not provide substantive shading therefore their removal would not significantly compromise amenity of future residents of the development who access the rooftop. Therefore based on the above, the removal of the pergolas is supported.

Modification No. 2 – Amendments to the external façade of both buildings

Minor modifications to the external façade of both buildings are proposed. The changes involve slight modifications to the location of windows within 2 units on the southern building at Level 4 (S 5.08 and S 5.17) to the study rooms. These windows will not impact on the privacy of the neighbouring properties as they face the side boundaries.

Additionally the wall along the outer edge of the balconies in N2.05, N2.10, S2.04, S2.13, S3.04 and S3.13 have been extended to comply with the fire safety report provided with the application. This is supported.



Figure 3. Example of balcony being extended on Level 2 Southern Building

The proposal seeks to modify the external façade to reflect the approved floor plans from the previous modifications which relate to the window locations, upstand has been added on the first floor of the southern building, upstand removed from the top of the buildings and the dashed outline of right-of-way- location of access point shown on the western elevation.

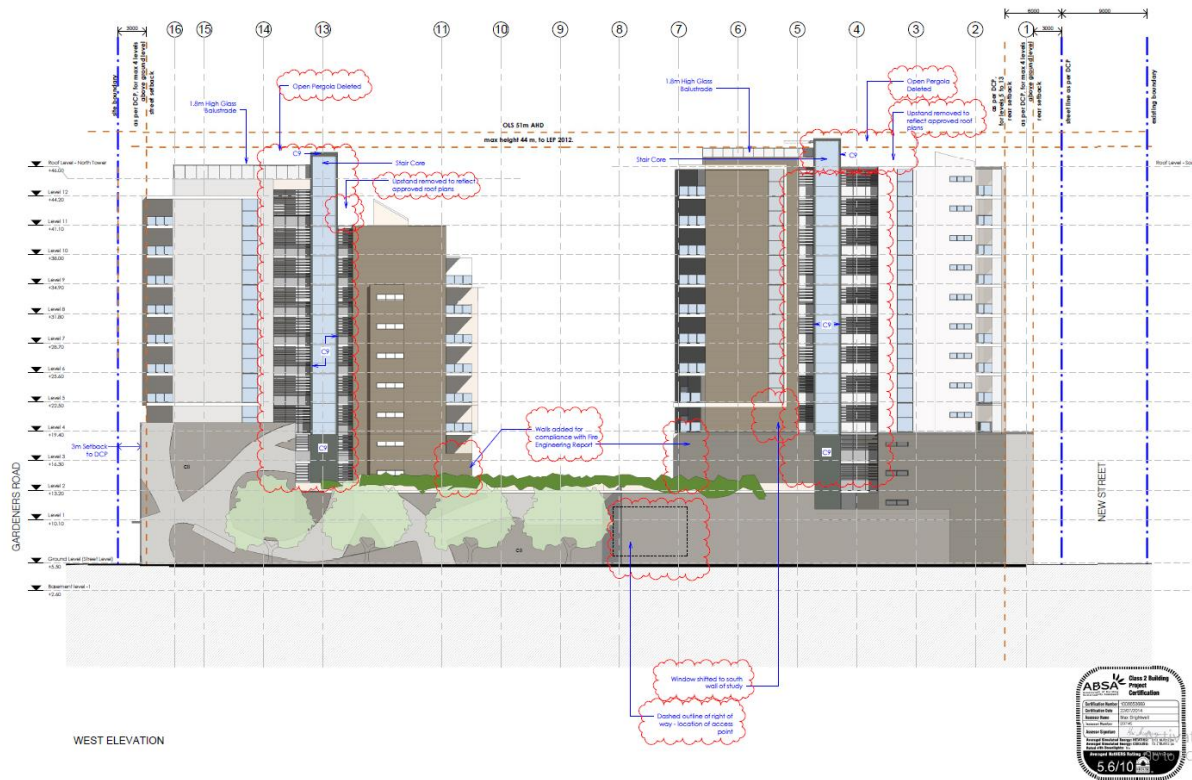


Figure 4. Western Elevation showing the changes proposed to façade to reflect the approved plans

Modification No. 3 – Amend Condition No. 47 relating to the wind impact assessment

The previous modification approved 1.8 metre high glazed balustrading around the perimeter of the rooftop communal open terraces on both the Northern and Southern buildings. However the Qualitative Wind Impact Assessment was not amended to reflect this change in the wind mitigation.

The amended qualitative wind impact assessment, prepared by SLR Consulting Pty Ltd, stipulates that 1.80m high perimeter windbreaks and awnings, provided to the North and South Building Rooftop terraces and around the outdoor pool area are provided. Therefore Condition No. 47 has been amended to reference the updated wind assessment report.

Modification No. 4 – Amend Condition No. 1 and 130 to reflect the amended plans and subject application

The proposed modifications will reflect the amended plans and subject application. This is acceptable.

SECTION 4.56 CONSIDERATIONS (previously Section 96AA)

In accordance with Section 4.56, a consent authority may, on application being made by the applicant or any other person entitled to act on a consent granted by the Court and subject to and in accordance with the regulations, modify the development consent if:

- a) *it is satisfied that the development to which the consent as modified related is substantially the same development as the development for which the consent was*

originally granted and before that consent as originally granted was modified (if at all), and;

b) it has notified the application in accordance with:

i. the regulations, if the regulations so require, and

ii. a development control plan, if the consent authority is a council that has made a development control plan that requires the notification or advertising of applications for modification of a development consent, and

c) it has notified, or made reasonable attempts to notify, each person who made a submission in respect of the relevant development application of the proposed modification by sending written notice to the last address known to the consent authority of the objector or other person, and

d) it has considered any submissions made concerning the proposed modification within any period prescribed by the regulations or provided by the development control plan, as the case may be.

The development, as modified, will remain substantially the same development for which Development Consent No. 13/135 was granted by the Court and will have minimal environmental impacts.

(a) Substantially the same development

The Section 4.56 Modification Application relates to amendments predominantly to the removal of pergolas, external façade of the buildings and conditions, and as such, the modifications will result in substantially the same development as approved under DA-13/135 and then subsequently modified. It is considered that the proposed amendments are suitable in the context of the site and the locality. The proposed scheme as modified will not have any material impacts on the development approved by the Court. The proposed modifications do not seek to alter the description, use and nature of the mixed use proposal.

(b) Notification

In accordance to the above, the Section 4.56 application was required to be notified for a fourteen day period between 15 January to 1 February 2018 as the development was defined as an advertised development in accordance with the *Environmental Planning and Assessment Regulations*.

(c) Submissions

No objections were received as part of the application.

SECTION 4.15 CONSIDERATIONS (previously section 79c)

The relevant matters for consideration pursuant to Section 4.15 are addressed as follows:

(a) The provisions of any EPI and DCP and any other matters prescribed by the Regulations.

State Environmental Planning Policy 65- Design Quality of Residential Apartment Development

The modifications have been assessed against SEPP 65 and the ADG. The primary application was lodged prior to the ADG enforced and had been assessed against the RFDC. The modifications do not trigger any non-compliance with the SEPP or the guidelines (other than what was approved by the L&E Court). The applicant has provided a revised design verification which is supported by Council.

Botany Bay Local Environmental Plan 2013

The subject site is zoned B4 Mixed Use in accordance with the provisions of the Botany Bay Local Environmental Plan (BBLEP) 2013.

The proposed modifications will be consistent with the objectives of the BBLEP 2013 with regard to development in the B4 zone. There are no changes proposed to the development standards.

Botany Bay Development Control Plan 2013

The proposed modifications will comply to the same extent with the provisions and objectives of the DCP as the original development consent and will not impact significantly upon the visible external appearance of the development when viewed from the public domain areas.

(b) Likely impacts

The proposed modifications relate only to amendments predominantly to the removal of pergolas, external façade of the buildings and conditions, and as such, the modifications, and as such, it is considered that the proposed amendment will have no significant adverse environmental, social or economic impacts on the locality. The proposed modifications will have no additional environmental impacts beyond those considered by Council and the Court during the assessment and determination of DA-2013/135/1 (Court Order 14/10196).

(c) Suitability of the site

The suitability of the site was addressed in the original approval of DA-13/135.

(d) Submissions

No objections were received.

(e) The public interest.

The proposed amendments will have no significant adverse impact upon the public interest.

CONCLUSION

The Section 4.56 Application seeks to modify Development Consent No. 13/135 which approved the demolition and construction of a mixed use development. The modifications include the removal of pergolas, external façade of the buildings and modification to conditions. The development, as modified, is substantially the same development as that originally approved. The proposed modification will not alter the built form or character of the development, and will continue to ensure the development is carried out in an orderly manner. Therefore it is recommended that the Panel approve the proposed modifications to the proposal.

RECOMMENDATION

It is RECOMMENDED that the Panel resolve pursuant to Section 4.56 of the *Environmental Planning and Assessment Act 1979*, in respect of Development Consent No. DA-13/135 for the construction of a mixed development at 659-669 Gardeners Road, Mascot to:

- Amend Condition No. 1 which relates to the plans modified as part of the subject application;
- Delete Condition No. 47 which relates to the Qualitative Wind Impact Assessment Report;
- Amend Condition No. 130 to refer to this Section 96AA Application.

Premises: 659-669 Gardeners Road, Mascot

DA-13/135/07

SCHEDULE OF CONSENT CONDITIONS

GENERAL CONDITIONS

1. The development is to be carried out in accordance with the following plans and endorsed with Council's stamp, except where amended by other conditions of this consent. Reference documentation is also listed.

Drawing No.	Author	Dated Received
Site Analysis – Drawing No. 01 Revision D	MD+A Architects	Dated 24 July 2014. Received by council 24 July 2014.
Site Survey & Demolition Plan – Drawing No. 03 Revision E	MD+A Architects	Dated 24 July 2014. Received by council 24 July 2014.
Site/Roof Plan– Drawing No. 04 Revision G H I	Nettleton Tribe	Dated 24 July 2014. 11 April 2017-18 December 2017 Received by council 24 July 2014 19 April 2017 21 December 2017
Landscaped Area + DSL Areas – Drawing No. 06 Revision D F G H	Nettleton Tribe	Dated 24 July 2014-19 August 2016 4 November 2016 11 April 2017. Received by council 24 July

Drawing No.	Author	Dated Received
		2014 24 August 2016 16 November 2016 19 April 2017.
Common Open Space Diagrams & Calculations – Drawing No. 07 Revision D E	Nettleton Tribe	Dated 24 July 2014 11 April 2017. Received by council 24 July 2014 19 April 2017.
Private Open Space – Drawing No. 08 Revision D E F	Nettleton Tribe	Dated 24 July 2014 26 May 2016 8 November 2016 . Received by council 24 July 2014 22 June 2016 16 November 2016.
Private Open Space – Drawing No. 09 Revision C D	Nettleton Tribe	Dated 24 July 2014 8 November 2016. Received by council 24 July 2014 16 November 2016.
FSR & GFA Calculation Diagrams – Drawing No. 10 Revision F G H	Nettleton Tribe	Dated 24 July 2014 26 May 2016 21 October 2016 . Received by council 24 July 2014 22 June 2016 16 November 2016.
Basement Plan Level 1 plan Stage 1– Drawing No. 12 Revision F G	Nettleton Tribe	Dated 24 July 2014 26 May 2016. Received by council 24 July 2014 22 June 2016.
Ground Level Plan (Street Level) – Drawing No. 13 Revision F G	Nettleton Tribe	Dated 24 July 2014 26 May 2016. Received by council 24 July 2014 22 June 2016.
Level 1 Plan – Drawing No. 14 Revision H I	Nettleton Tribe	Dated 24 July 2014 26 May 2016. Received by council 24 July 2014 22 June 2016.
Level 2 Plan – Drawing No. 15 Revision H I K L	Nettleton Tribe	Dated 24 July 2014 19 August 2016 4 November 2016 18 December 2017 . Received by council 24 July 2014 24 August 2016 16 November 2016 21 December 2017 .
Level 3 Plan – Drawing No. 16 Revision H I J K	Nettleton Tribe	Dated 24 July 2014 26 May 2016 8 November 2016 18 December 2017 . Received by council 24 July 2014 22 June 2016 16 November 2016 21 December 2017 .
Level 4 Plan – Drawing No. 17 Revision H I J	Nettleton Tribe	Dated 24 July 2014 4 November 2016 18 December 2017 . Received

Drawing No.	Author	Dated Received
		by council 24 July 2014 20 March 2017 21 December 2017.
Level 5 Plan – Drawing No. 18 Revision H I	Nettleton Tribe	Dated 24 July 2014 4 November 2016. Received by council 24 July 2014 16 November 2016.
Level 6 Plan – Drawing No. 19 Revision H I	Nettleton Tribe	Dated 24 July 2014 4 November 2016. Received by council 24 July 2014 16 November 2016.
Level 7 Plan – Drawing No. 20 Revision H I	Nettleton Tribe	Dated 24 July 2014 4 November 2016. Received by council 24 July 2014 16 November 2016.
Level 8 Plan – Drawing No. 21 Revision H I	Nettleton Tribe	Dated 24 July 2014 4 November 2016. Received by council 24 July 2014 16 November 2016.
Level 9 Plan – Drawing No. 22 Revision H I	Nettleton Tribe	Dated 24 July 2014 4 November 2016. Received by council 24 July 2014 20 March 2017.
Level 10 Plan – Drawing No. 23 Revision H I	Nettleton Tribe	Dated 24 July 2014 4 November 2016. Received by council 24 July 2014 16 November 2016.
Level 11 Plan – Drawing No. 24 Revision H I	Nettleton Tribe	Dated 24 July 2014 4 November 2016. Received by council 24 July 2014 16 November 2016.
Level 12 Plan – Drawing No. 25 Revision H I J K	Nettleton Tribe	Dated 24 July 2014 4 November 2016 11 April 2017 18 December 2017. Received by council 24 July 2014 16 November 2016 19 April 2017 21 December 2017.
Roof Level Plan – Drawing No. 26 Revision H I J	Nettleton Tribe	Dated 24 July 2014 11 April 2017 18 December 2017. Received by council 24 July 2014 19 April 2017 21 December 2017.

Drawing No.	Author	Dated Received
Ground Level Plan (Street Level)- Stage 2 – Drawing No. 27 Revision D E F	Nettleton Tribe	Dated 24 July 2014 26 May 2016 4 November 2016. Received by council 24 July 2014 22 June 2016 16 November 2016.
North Elevation- Northern Building – Drawing No. 31 Revision G H I J	Nettleton Tribe	Dated 24 July 2014 4 November 2016 11 April 2017 18 December 2017 . Received by council 24 July 2014 16 November 2016 19 April 2017 21 December 2017 .
North Elevation- Southern Building – Drawing No. 32 Revision G H I J	Nettleton Tribe	Dated 24 July 2014 4 November 2016 11 April 2017 18 December 2017 . Received by council 24 July 2014 16 November 2016 19 April 2017 21 December 2017 .
South Elevation- Northern Building – Drawing No. 33 Revision G H I J	Nettleton Tribe	Dated 24 July 2014 4 November 2016 11 April 2017 18 December 2017 . Received by council 24 July 2014 16 November 2016 19 April 2017 21 December 2017 .
South Elevation- Southern Building – Drawing No. 34 Revision G H I J L	Nettleton Tribe	Dated 24 July 2014 4 November 2016 11 April 2017 18 December 2017 . Received by council 24 July 2014 16 November 2016 19 April 2017 21 December 2017 .
East Elevation – Drawing No. 35 Revision G I J L	Nettleton Tribe	Dated 24 July 2014 4 November 2016 11 April 2017 18 December 2017 . Received by council 24 July 2014 16 November 2016 19 April 2017 21 December 2017 .
West Elevation – Drawing No. 36 Revision G I J L	Nettleton Tribe	Dated 24 July 2014 4 November 2016 11 April 2017 18 December 2017 . Received by council 24 July 2014 16 November 2016 19 April 2017 21 December 2017 .

Drawing No.	Author	Dated Received
Materials and Finishes – Drawing No. 37 Revision C E	Nettleton Tribe	Dated 24 July 2014 18 December 2017 Received by council 15 August 2014 21 December 2017
South Elevation – Southern building (Stage 2) – Drawing No. 38 Revision B C D-E	Nettleton Tribe	Dated 24 July 2014 4 November 2016 11 April 2017 18 December 2017 . Received by council 24 July 2014 16 November 2016 19 April 2017 21 December 2017 .
Section 1 – Drawing No. 41 Revision I J K	Nettleton Tribe	Dated 24 July 2014 11 April 2017 18 December 2017 . Received by council 24 July 2014 19 April 2017 21 December 2017 .
Unit Layout Plans 01 – Drawing No. 101 Revision B	MD+A Architects	Dated 24 July 2014. Received by council 24 July 2014.
Unit Layout Plans 02 – Drawing No. 102 Revision B	MD+A Architects	Dated 24 July 2014. Received by council 24 July 2014.
Unit Layout Plans 03 – Drawing No. 103 Revision B	MD+A Architects	Dated 24 July 2014. Received by council 24 July 2014.
Unit Layout Plans 04 – Drawing No. 104 Revision B	MD+A Architects	Dated 24 July 2014. Received by council 24 July 2014.
Unit Layout Plans 05, Drawing No. 105, Issue B C	Nettleton Tribe	Dated 24 July 2014 1 July 2016 . Received by council 24 July 2014 16 November 2016 .
Unit Layout Plans 06, Drawing No. 106, Issue B	MD+A Architects	Dated 24 July 2014. Received by council 24 July 2014.
Unit Layout Plans 07, Drawing No. 107, Issue B	MD+A Architects	Dated 24 July 2014. Received by council 24 July 2014.
Unit Layout Plans 08, Drawing No. 108, Issue B	MD+A Architects	Dated 24 July 2014. Received by council 24 July 2014.

Drawing No.	Author	Dated Received
Shadow Diagrams March – Drawing No. 51A Revision D	MD+A Architects	Dated 24 July 2014. Received by council 24 July 2014.
Shadow Diagrams March – Drawing No. 51B Revision C	MD+A Architects	Dated 24 July 2014. Received by council 24 July 2014.
Shadow Diagrams March – Drawing No. 52A Revision D	MD+A Architects	Dated 24 July 2014. Received by council 24 July 2014.
Shadow Diagrams March – Drawing No. 52B Revision C	MD+A Architects	Dated 24 July 2014. Received by council 24 July 2014.
Shadow Diagrams March – Drawing No. 53A Revision D	MD+A Architects	Dated 24 July 2014. Received by council 24 July 2014.
Shadow Diagrams March – Drawing No. 53B Revision C	MD+A Architects	Dated 24 July 2014. Received by council 24 July 2014.
Cover Page- Drawing Schedule and Plant Schedule. LAN-DA-000 Revision C E F	360 Degrees	Dated 24 July 2014 8 June 2016 Received by council 24 July 2014 7 November 2016. 22 June 2016 16 November 2016.
Key Plan LAN-DA-001 Revision C	360 Degrees	Dated 24 July 2014. Received by council 24 July 2014.
Landscape Plan- Ground Level LAN-DA-002 Revision C D	360 Degrees	Dated 24 July 2014 22 August 2016. Received by council 24 July 2014 24 August 2016.
Landscape Typical- Street Elevations LAN-DA-003 Revision C G	360 Degrees	Dated 24 July 2014 12 April 2017. Received by council 24 July 2014 19 April 2017.
Landscape Plan – Level 1- Sky Garden LAN-DA-004 Revision C	360 Degrees	Dated 24 July 2014. Received by council 24 July 2014.
Landscape Plan- Level 1- Central Park LAN-DA-005 Revision C H	360 Degrees	Dated 24 July 2014 7 November 2016. Received by council 24 July 2014 16 November 2016.
Landscape Typical Elevations – Level 2 –	360 Degrees	Dated 24 July 2014 18 August 2016 7 November 2016 12 April 2017. Received by council 24 July

Drawing No.	Author	Dated Received
Central Park LAN-DA-006 Revision C G H		2014 24 August 2016 16 November 2016 19 April 2017.
Landscape Plan- Level 3 LAN-DA-007 Revision C	360 Degrees	Dated 24 July 2014. Received by council 24 July 2014.
Landscape Plan – Level 4 and Typical Planters to Levels 5, 6, 7 and 8 LAN- DA-008 Revision C	360 Degrees	Dated 24 July 2014. Received by council 24 July 2014.
Landscape Plan – Typical Planters to Levels 9, 10 ,11 and 12 LAN-DA-009 Revision C	360 Degrees	Dated 24 July 2014. Received by council 24 July 2014.
Landscape Plan-Typical 'Streets in the Sky' (Level 11) LAN-DA-010 Revision C	360 Degrees	Dated 24 July 2014. Received by council 24 July 2014.
Landscape Plan- Level 12- Roof Garden –North Building- Sky Park LAN-DA- 011 Revision C G	360 Degrees	Dated 24 July 2014 12 April 2017. Received by council 24 July 2014 19 April 2017.
Landscape Plan – Level 13- Roof Garden – South Building-Sky Park LAN-DA- 012 Revision C G	360 Degrees	Dated 24 July 2014 12 April 2017. Received by council 24 July 2014 19 April 2017.
Landscape Plan- Level 10 North- LAN DA-013- Rev A	360 Degrees	Dated 7 November 2016; Received 16 November 2016
'Streets' Concept Details, Drawing No. 111, Revision A	MD+Architects	Dated 24 July 2014. Received by council 24 July 2014.
GFA of corridors for northern building	-	Received 29 March 2017
GFA of corridors for southern building	-	Received 29 March 2017

(DA-13/135/04)(DA-13/135/05)(DA-13/135/06)(**DA-13/135/07**)

Reference Documents	Author	Date
Amended Development Application Report – Volume 1/ Job No. 13-013	BBC Consulting Planners	Report dated April 2014. Received by council 14 April 2014.

Reference Documents	Author	Date
Illustrative Figures - Amended Development Application Report – Volume 1.	BBC Consulting Planners	Report dated April 2014. Received by council 14 April 2014.
Phase 2 - Environmental Site assessment Ref: e27228kgrpt	Environmental Investigation Services	Report dated 21 March 2014. Received by council 14 May 2014.
REMEDIAL ACTION PLAN (RAP). Ref: E27228KGrpt2-RAP	Environmental Investigation Services	Report dated 7 April 2014. Received by Council on 1 May 2014.
WASTE CLASSIFICATION ASSESSMENT. Ref: E27228KGlet1	Environmental Investigation Services	Report dated 31 March 2014. Received by Council on 1 May 2014.
Quantity Surveyors Statement	Altus Page Kirkland	Report dated 14 April 2014. Received by Council on 28 April 2014.
Solar Access Studies	SLR Consulting Pty Ltd (SLR)	Report dated 10 April 2014. Received by Council on 28 April 2014.
Urban Design Report	Olsson Associates Architects	Report dated 14 April 2014. Received by Council on 14 April 2014.
Economic Assessment	Hill PDA	Report dated April 2014. Received by Council on 14 April 2014.
Arboricultural Impact Report – 659-669 Gardeners Road Mascot – Amended Development Proposal.	Landscape Matrix Pty Ltd	Dated 8 April 2014. Received by Council on 14 April 2014.
Qualitative Wind Impact Assessment	SLR Consulting Pty Ltd (SLR)	Report dated 29 July 2013 21 March 2017 3 November 2017 . Received by Council on 2 August 2013 19 April 2017 21 December 2017
Qualitative Natural Ventilation Assessment. Report Number 610.13863-R1	SLR Consulting Pty Ltd (SLR)	Report dated 11 April 2014. Received by Council on 14 April 2014.
Waste management plan	Leigh Design Pty Ltd	Report dated 10 April 2014. Received by Council on 14 April 2014.

Reference Documents	Author	Date
BCA compliance capability report	Environet Consultancy Pty Ltd	Report dated April 2014. Received by Council on 14 April 2014.
Landscape Architect's Design Statement	360 Degrees	Report dated April 2014 12 April 2017. Received by Council on 14 April 2014 19 April 2017.
Traffic Impact Assessment Reference 13.031r02v03	Traffix Traffic and Transport Planners	Report dated 14 April 2014. Received by Council on 14 April 2014.
Access Report	Environet Consultancy Pty Ltd	Report dated April 2014. Received by Council on 14 April 2014.
Design Verification Statement	MD+A Architects Australia P/L Nettleton Tribe	Report dated April 2013 11 November 2016 March 2017 December 2017 . Received by Council on 14 April 2014 16 November 2016 19 April 2017 21 December 2017
Architectural Statement Amended Development Application	MD+A Architects Australia P/L	Report dated 14 April 2014. Received by Council on 14 April 2014.
DA Noise Impact Assessment	Acoustic Logic	Report dated 25 April 2013. Received by Council on 02 August 2013
Geotechnical Assessment Report (Ref: 26374Zrpt)	JK Geotechnics GEOTECHNICAL & ENVIRONMENTAL ENGINEERS	Report dated 5 March 2013. Received by Council on 02 August 2013
Acid Sulfate Soils Report (Ref: E26374Kletrev1)	Environmental Investigations Services	Report dated 29 July 2013. Received by Council on 02 August 2013
Arboricultural Impact Report	Landscape Matrix Pty Ltd.	Report dated 30 July 2013. Received by Council on 02 August 2013
BASIX Certificate No. 492622M_02	Max Brightwell	Dated 24 July 2014. Received by Council on 24 July 2014.

Reference Documents	Author	Date
NATHERS Certificate No. 1006658072	Max Brightwell	Dated 24 July 2014. Received by Council on 24 July 2014.
Section 96AA report	BBC Consulting	Dated 16 November 2016 19 April 2017; Received 16 November 2016 19 April 2017
Section 96AA report with further changes to conditions	BBC Consulting	Dated 21 December 2016; Received 21 December 2016
Section 96AA- Further modifications to the plans/conditions	Dedico Development Services	Dated 20 March 2017; Received 20 March 2017
Section 96AA- Report	Dedico Development Services	Dated 19 December 2017; Received 21 December 2017
Justification for FSR	Dedico Development Services	Dated 21 December 2016; Received 21 December 2016
Aeronautical Impact Assessment	The Ambidji Group	Dated 2 May 2017; Received 3 May 2017
Fire Safety Engineering Report	Defire Innovative Fire Safety	Dated 19 December 2017; Received 21 December 2017

(DA-13/135/05) (DA-13/135/06) **(DA-13/135/07)**

No construction works (including excavation) shall be undertaken prior to the issue to the Construction Certificate.

2. The applicant must prior to the obtainment of the approved plans and specifications pay the following fees:
 - a) Development Control \$11,200.00;
3. The applicant must prior to the issue of the first Construction Certificate, pay the following fees:
 - a) Builders Security Deposit \$50,000.00;
 - b) Public Works Bond \$60,000.00;
 - c) *Section 94 Contribution* ~~\$4,803,572~~ \$4,839,904.59
 - d) Waste Levy \$5,000.00
 - e) Subdivision Certificate (Torrens) \$530.00;
 - f) Linen Handling Fee (Torrens) \$495.00.

Note: The Section 94 Contribution fees are subject to annual review and the current rates are applicable for the financial year in which your consent is granted. If you pay the contribution in a later financial year you will be required to pay the fee applicable at the time.

(Section 94 contribution amended DA13/135/02; Reference to first CC added DA13/135/03)(DA-13/135/04)

3A. *The construction of the development will be timed in four stages with the following separate Construction Certificates for each stage:*

- a) Site establishment/shoring/excavation;*
- b) Footings/in-ground services/structure;*
- c) Façade/services/finishes; and*
- d) External works.*

Note: The consent is structured to include conditions to be satisfied prior to the issue of the first construction certificate or prior to the relevant construction certificate. (Condition inserted DA13/135/03)

4.

- a) This Consent relates to land in Lot 1 in DP 797133 and Lot 1 in DP534350 and Lot 31 in DP789177 and as such, building works must not encroach on to adjoining lands or the adjoining public place, other than public works required by this consent; and
- b) Separate development applications must be lodged with Council for the use of the individual retail tenancies and associated signage.

5. The Applicant is to remove the two street trees as shown on the approved landscape plan (LAN-DA-002) at their expense. The trees may only be removed after a Construction Certificate has been issued. The following is stipulated:

- a) A qualified Arborist with their own public liability insurance must be engaged to undertake the work;
- b) All work is to take place on the Council road reserve with the appropriate safety and directional signage implemented to ensure public safety and access otherwise road and footpath closures require a Council Road Occupancy Permit;
- c) A Dial-Before-You-Dig enquiry is required prior to stump grinding the trunks. Tree removal work shall occur without damage to Council infrastructure or underground services and utilities;

Note: Council will take no responsibility for any damage incurred to persons, property or services during the tree removal works.

6. It is a condition of consent that the applicant shall, at no cost or expense to Council, comply with the following:

- a) Dedicate the portion of land to Council for the purpose of a new public road. The area of the land to be dedicated shall be the full length of the southern property boundary for a width of 9 metres as shown on the stamped approved plans. The Plan of Dedication shall be lodged with Council prior to the issue of the relevant

Construction Certificate and registered with the Department of Lands prior to the issue of the Occupation Certificate. A copy of the registered document shall be submitted to Council for record purposes; (DA13/135/03)

- b) The construction of New Street and public domain such as footpaths, street lighting, landscaping, etc. shall be constructed by the Applicant at no cost to Council or the body corporate. The developer may enter into a Voluntary Planning Agreement (VPA) with Council to provide a monetary contribution in lieu of the construction works for the new road. A signed undertaking shall be submitted by the applicant prior to the issue of the Occupation Certificate;
- c) A Public Domain Plan shall be submitted to and approved by Council for public domain improvements along the frontage of the development to Gardeners Road. The Public Domain Plan shall include but not be limited to footpath treatments, service adjustments/access lids and street trees (as provided by the Landscape Consultant), adjoining the site together with the provision of appropriate street light standards, drainage (if any), kerb and gutter, footway, bicycle paths, landscaping, traffic signs). The landscape component shall be in accordance with Council's City Identity Program and any other Council specification or requirement. All public domain/footpath improvements shall be installed in accordance with Council specifications by the Applicant and at the Applicant's expense. All improvements shall be completed prior to the issue of an final Occupation Certificate;
- d) Replace all the existing above ground electricity and telecommunication cables to underground cables within the site and road reserve area fronting Gardeners Road in accordance with the guidelines and requirements of the relevant utility authorities. The applicant shall bear all the cost of the construction and installation of the cables and any necessary adjustment works. These works and payments shall be completed prior to the issue of the Occupation Certificate;
- e) Provide appropriate and suitable street lighting to a high decorative standard to the Gardeners Road street frontage of the site, so as to provide safety and illumination for residents of the development and pedestrians in the area. All street lighting shall comply with relevant electricity authority guidelines and requirements;
- f) The public footpaths in Gardeners Road shall be constructed in accordance with Council specifications and the Draft Public Domain Manual. The footpath dimensions, location, paver type and construction methods shall be in accordance with these specifications. Hold points and Council inspections are required after formwork setback and to prior pouring the concrete blinding slab, at the commencement of paving works and at final completion as a minimum. Pavers shall be ordered allowing for adequate lead time for manufacture (10-12 weeks); and
- g) New street trees at the pot size specified shall be installed in the accordance with the approved Public Domain Plan. The trees shall be sourced from a reputable supplier that grows stock to the NATSPEC specifications. A Dial-Before-You-Dig enquiry is required prior to all planting - Council is not liable for any damage to subsurface infrastructure during public domain works. Two hold point inspections are required: prior planting trees to ensure plant stock is suitable and post-planting.

- h) The completion of works at (a) to (g) above are pre-conditions to the issue of the Occupation Certificate.
7. The consent given does not imply that works can commence until such time that:
- a) Detailed plans and specifications of the building have been endorsed with a Construction Certificate by:
 - i. The consent authority; or,
 - ii. An accredited certifier; and,
 - b) The person having the benefit of the development consent:
 - i. Has appointed a principal certifying authority; and
 - ii. Has notified the consent authority and the Council (if the Council is not the consent authority) of the appointment; and,
 - iii. The person having the benefit of the development consent has given at least 2 days notice to the council of the persons intention to commence the erection of the building.
8. All building work must be carried out in accordance with the provisions of the Building Code of Australia.
9. Pursuant to clause 97A(3) of the Environmental Planning & Assessment Regulation 2000, it is a condition of this development consent that all the commitments identified in the relevant BASIX Certificate for the each building in the development are fulfilled.
- a) Note: Relevant BASIX Certificate means:
 - i. A BASIX Certificate that was applicable to the development when this development consent was granted (or, if the development consent is modified under Section 96 of the Act, a BASIX Certificate that is applicable to the development when this development consent is modified); or
 - ii. If a replacement BASIX Certificate accompanies any subsequent application for a construction certificate, the replacement BASIX Certificate.
 - iii. BASIX Certificate has the meaning given to that term in the Environmental Planning and Assessment Regulation 2000.

CONDITIONS IMPOSED BY AN EXTERNAL AUTHORITY

10. The following conditions are imposed by **Ausgrid**:
- a) Provision shall be made for accommodation of an electricity substation with the premises.
 - b) There are existing substations adjoining the lot on the Western and Eastern side. The requirement for fire segregation must be met as per Ausgrid Network

Standard 141 *Site Selection and Site Preparation Standards for Kiosk Type Substations*, clause 6.

11. The following conditions are imposed by the **NSW Roads and Maritime Service (RMS)**.

- a) Any redundant driveways off Gardeners Road shall be removed and replaced with kerb and gutter.
- b) The swept path of the longest vehicle (including garbage trucks) entering and exiting the subject site as well as manoeuvrability through the site, shall be in accordance with AUSTROADS.
- c) The temporary vehicular access on Gardeners Road shall be removed within 6 months of the construction of the new east-west road along the southern site boundary is completed. The redundant vehicular access on Gardeners Road shall be replaced with kerb and gutter to match existing.
- d) The design and construction of the vehicular crossing and kerb and gutter works on Gardeners Road shall be in accordance with Roads and Maritime requirements. Details of these requirements should be obtained from Roads and Maritime's Project Services Manager, Traffic Projects Section, Parramatta on 8849 2496.
- e) The proposed new east/west road shall be dedicated as road at no cost to Roads and Maritime or Council.
- f) The post development stormwater discharge from the subject site into the RMS drainage system should not exceed the pre development discharge.

Detailed design plans and hydraulic calculations of any changes to the stormwater drainage system are to be submitted to RMS for approval, prior to commencement of any works. Details should be forwarded to:

The Sydney Asset Management

Roads and Maritime Services

PO Box 973 Parramatta CBD 2124

A plan checking fee will be payable and a performance bond may be required before RMS approval is issued. With regard to the Civil Works requirements please contact the RMS Project Engineer, External Works Ph: 8849 2114 or Fax: 8849 2766

- g) The developer is to comply with the requirements of the attached Technical Direction (GTD 2012/001). This will require the developer to submit detailed design drawings and geotechnical reports relating to the excavation of the site and support structures to the Roads and Maritime for assessment. The developer is to meet the full cost of the assessment by the Roads and Maritime.

The report would need to address the following key issues:

- i. The impact of excavation/rock anchors on the stability of the Gardeners Road and detailing how the carriageway would be monitored for settlement.
- ii. The impact of the excavation on the structural stability of the Gardeners Road.

iii. Any other issues that may need to be addressed (Contact: Roads and Maritime's Project Engineer, External Works Ph: 8849 2114 or Fax 8849 2766 for details).

- h) The proposed residential component of the development should be designed such that road traffic noise from Gardeners Road is mitigated by durable materials to satisfy requirements under Clause 102(3) of State Environmental Planning Policy (Infrastructure) 2007. The Roads and Maritime's Environmental noise Management Manual provides practical advice in selecting noise mitigation treatments.
 - i) The developer shall be responsible for all public utility adjustment/relocation works, necessitated by the above work and as required by the various public utility authorities and/or their agents. All works associated with the development are to be at no cost to RMS or Council.
 - j) All demolition and construction vehicles are to be contained wholly within the site and vehicles must enter the site before stopping.
 - k) The layout of the proposed car parking areas associated with the subject development (including driveways, grades, turn paths, sight distance requirements, aisle widths, aisle lengths and parking bay dimensions) should be in accordance with AS 1890.1-2004, AS 2890.2 – 2002 for heavy vehicle usage and AS 2890.6:2009 for the disabled.
 - l) A Construction Traffic Management Plan detailing construction vehicle routes, number of trucks, hours of operation, access arrangements and traffic control should be submitted to Council prior to the issue of the Construction Certificate.
12. The following conditions form the General Terms of Approval by the ~~NSW Office of Water~~ ~~Water NSW~~ dated 11 August 2016 and must be complied with:

General

- ~~a) — An authorisation shall be obtained from NSW Office of Water for the take of groundwater as part of the activity. Groundwater shall not be pumped or extracted for any purpose other than temporary construction dewatering at the site identified in the development application. The authorisation shall be subject to a currency period of 12 months from the date of issue and will be limited to the volume of groundwater take identified in the authorisation.~~
- ~~b) — The design and construction of the building must prevent any take of groundwater after the authorisation has lapsed by making any below-ground levels that may be in contact with groundwater watertight for the anticipated life of the building. Waterproofing of below-ground levels must be sufficiently extensive to incorporate adequate provision for reasonably foreseeable high water table elevations to prevent potential future inundation.~~
- ~~c) — Construction methods and material used in and for construction shall be designed to account for the likely range of salinity and pollutants which may be dissolved in groundwater, and shall not themselves cause pollution of the groundwater.~~

Prior to excavation

- d) ~~Measurements of groundwater levels beneath the site from a minimum of three monitoring bores shall be taken. These measurements should be included in a report provided to the NSW Office of Water in support of the dewatering licence application, along with a schedule and indicative level predictions for the proposed ongoing water level monitoring from the date of consent until at least two months after the cessation of pumping shall be included in the report.~~
- e) ~~A reasonable estimate of the total volume of groundwater to be extracted shall be calculated and a report provided to the NSW Office of Water. Details of the parameters (e.g. permeability predicted by slug testing, pump testing or other means) and calculation method shall be included in the report submitted to the NSW Office of Water in support of the dewatering licence.~~
- f) ~~A copy of a valid development consent for the project shall be provided in the report to the NSW Office of Water.~~
- g) ~~Groundwater quality testing shall be conducted on a suitable number of samples using a suitable suite of analytes and completed by a NATA-certified laboratory, with the results collated and certificates appended to a report supplied to the NSW Office of Water. Samples must be taken prior to the substantial commencement of dewatering, and a schedule of the ongoing testing throughout the dewatering activity shall be included in the report. Collection and testing and interpretation of results must be done by suitably qualified persons and NATA certified laboratory identifying the presence of any contaminants and comparison of the data against accepted water quality objectives or criteria.~~
- h) ~~The method of disposal of pumped water shall be nominated (i.e. reinjection, drainage to the stormwater system or discharge to sewer) and a copy of the written permission from the relevant controlling authority shall be provided to the NSW Office of Water. The disposal of any contaminated pumped groundwater (sometimes referred to as "tailwater") must comply with the provisions of the Protection of the Environment Operations Act 1997 and any requirements of the relevant controlling authority.~~
- i) ~~Contaminated groundwater (i.e. above appropriate NEPM 2013 investigation thresholds) shall not be reinjected into any aquifer without the specific authorisation of the NSW Environment Protection Authority (any such discharge would be regulated through a licence issued under the Protection of the Environment Operations Act 1997 [POEO Act]). The reinjection system design and treatment methods to remove contaminants shall be nominated and a report provided to the NSW Office of Water. The quality of any pumped water that is to be reinjected must be compatible with, or improve the intrinsic or ambient groundwater in the vicinity of the reinjection site.~~

During excavation

- j) ~~Engineering measures designed to transfer groundwater around the basement shall be incorporated into the basement construction to prevent the completed infrastructure from restricting pre-existing groundwater flows.~~
- k) ~~Piping, piling or other structures used in the management of pumped groundwater shall not create a flooding hazard. Control of pumped groundwater is to be maintained at all times during dewatering to prevent unregulated off-site discharge.~~

- ~~l) Measurement and monitoring arrangements to the satisfaction of the NSW Office of Water are to be implemented. Monthly records of the volumes of all groundwater pumped and the quality of any water discharged are to be kept and a report provided to the NSW Office of Water after dewatering has ceased. Daily records of groundwater levels are to be kept and a report provided to the NSW Office of Water after dewatering has ceased.~~
- ~~m) Pumped groundwater shall not be allowed to discharge off-site (e.g. adjoining roads, stormwater system, sewerage system, etc) without the controlling authorities approval and/or owners consent. The pH of discharge water shall be managed to be between 6.5 and 8.5. The requirements of any other approval for the discharge of pumped groundwater shall be complied with.~~
- ~~n) Dewatering shall be undertaken in accordance with groundwater-related management plans applicable to the excavation site. The requirements of any management plan (such as acid sulfate soils management plan or remediation action plan) shall not be compromised by the dewatering activity.~~
- ~~o) The location and construction of groundwater extraction works that are abandoned are to be recorded and a report provided to the NSW Office of Water after dewatering has ceased. The method of abandonment is to be identified in the documentation.~~
- ~~p) Access to groundwater management works used in the activity is to be provided to permit inspection when required by the NSW Office of Water under appropriate safety procedures.~~

Following excavation

- ~~q) All monitoring records must be provided to the NSW Office of Water after the required monitoring period has ended together with a detailed interpreted hydrogeological report identifying all actual resource and third party impacts.~~

General

- a) An authorisation shall be obtained for the take of groundwater as part of the activity. Groundwater shall not be pumped or extracted for any purpose other than temporary construction dewatering at the site identified in the development application. The authorisation shall be subject to a currency period of 12 months from the date of issue and will be limited to the volume of groundwater take identified.
- b) The design and construction of the building must prevent any take of groundwater after the authorisation has lapsed by making any below-ground levels that may be impacted by any water table fully watertight for the anticipated life of the building. Waterproofing of below-ground levels must be sufficiently extensive to incorporate adequate provision for unforeseen high water table elevations to prevent potential future inundation.
- c) Sufficient permanent drainage shall be provided beneath and around the outside of the watertight structure to ensure that natural groundwater flow is not impeded and:
 - 1) any groundwater mounding at the edge of the structure shall be at a level not greater than 10 % above the level to which the water table might naturally rise in the location immediately prior to the construction of the structure; and

- 2) any elevated water table is more than 1.0 m below the natural ground surface existent at the location immediately prior to the construction of the structure; and
 - 3) where the habitable part of the structure (not being footings or foundations) is founded in bedrock or impermeable natural soil then the requirement to maintain groundwater flows beneath the structure is not applicable.
- d) Construction methods and material used in and for construction shall be designed to account for the likely range of salinity and pollutants which may be dissolved in groundwater, and shall not themselves cause pollution of the groundwater.
 - e) Documentation (referred to as a 'report') comprising measurements, maps, bore logs, calculations, results, discussion and justification for various matters related to the dewatering process must be provided. Information will be required at several stages: prior to construction commencing (initial report - which will accompany the application for the authorisation), at any time when an authorisation renewal is required or a significant change in activities occurs (intermediate report); and at the completion of dewatering and related operations (completion report). Reports need to be submitted in a format consistent with electronic retrieval without editing restrictions; raw data should be presented in Excel spreadsheets without editing restrictions.

Prior to excavation

- f) The following shall be included in the initial report:
 - 1) measurements of groundwater levels beneath the site from a minimum of three relevant monitoring bores, together with details of the bores used in the assessment including bore logs and three-dimensional identification information.
 - 2) a map of the site and its immediate environs depicting the water table (baseline conditions) shown relative to the topography and approved construction footprint from the surface level and below. An assessment of the potential variation in the water table during the life of the proposed building together with a discussion of the methodology and information on which this assessment is based.
 - 3) details of the present and potential groundwater flow paths and hydraulic gradients in and around the site; the latter in response to the final volumetric emplacement of the construction.
 - 4) a schedule for the ongoing water level monitoring and description of the methodology to be used, from the date of consent until at least two months after the cessation of pumping. [Note that groundwater level measurements should be undertaken on a continuous basis using automatic loggers in monitoring bores.
- g) The Applicant shall assess the likely impacts of the dewatering activities on other groundwater users or structures or public infrastructure; this assessment will include an appropriate bore, spring or groundwater seep census and considerations relevant to potential subsidence or excessive settlement induced in nearby buildings and property, and be documented together with all calculations and information to support the basis of these in the initial report.

- h) Groundwater quality testing of samples taken from outside the footprint of the proposed construction, with the intent of ensuring that as far as possible the natural and contaminant hydrochemistry of the potential dewatered groundwater is understood, shall be conducted on a suitable number of samples and tested by a NATA-certified laboratory. Details of the sampling locations and the protocol used, together with the test results accompanied by laboratory test certificates shall be included in the initial report. An assessment of results must be done by suitably qualified persons with the intent of identifying the presence of any contaminants and comparison of the data against accepted water quality objectives or criteria for the intended dewatering purpose. In the event of adverse quality findings, the Applicant must develop a plan to mitigate the impacts of the hydrochemistry on the dewatered groundwater and present the details of all assessments and plans in the initial report.
- i) Groundwater quality testing generally in accordance with Clause 8, shall be undertaken on any anniversary or other renewal or alteration of any dewatering authorisation.
- j) A reasonable estimate of the total volume of groundwater to be extracted shall be calculated and included in the initial report; together with details and calculation methods for the parameters and supporting information to confirm their development or measurement (e.g. permeability determined by slug-testing, pump-testing or other means).
- k) A copy of a valid consent for the development shall be provided in the initial report.
- l) The method of disposal of pumped water shall be nominated (i.e. reinjection, drainage to the stormwater system or discharge to sewer) and a copy of the written permission from the relevant controlling authority shall be provided in the initial report. The disposal of any contaminated pumped groundwater (sometimes called "tailwater") must comply with the provisions of the Protection of the Environment Operations Act 1997 and any requirements of the relevant controlling authority.
- m) Contaminated groundwater (i.e. above appropriate NEPM 2013 thresholds) shall not be reinjected into any aquifer. The reinjection system design and treatment methods to remove contaminants shall be nominated and included in the initial report and any subsequent intermediate report as necessary. The quality of any pumped water that is to be reinjected must be demonstrated to be compatible with, or improve, the intrinsic or ambient groundwater in the vicinity of the reinjection site.

During excavation

- n) Engineering measures designed to transfer groundwater around and beneath the basement shall be incorporated into the basement construction to prevent the completed infrastructure from restricting pre-existing groundwater flows.
- o) Piping, piling or other structures used in the management of pumped groundwater shall not create a flooding hazard or induce mounding of groundwater. Control of pumped groundwater is to be maintained at all times during dewatering to prevent unregulated off-site discharge.
- p) Measurement and monitoring arrangements to the satisfaction of the approval body are to be implemented. Weekly records of the volumes of all groundwater pumped and the quality of any water discharged are to be kept and a completion

report provided after dewatering has ceased. Records of groundwater levels are to be kept and a summary showing daily or weekly levels in all monitoring bores provided in the completion report.

- q) Pumped groundwater shall not be allowed to discharge off-site (e.g. adjoining roads, stormwater system, sewerage system, etc.) without the controlling authority's approval and/or owner's consent/s. The pH of discharge water shall be managed to be between 6.5 and 8.5. The requirements of any other approval for the discharge of pumped groundwater shall be complied with.
- r) Dewatering shall be undertaken in accordance with groundwater-related management plans applicable to the excavation site. The requirements of any management plan (such as acid sulfate soils management plan or remediation action plan) shall not be compromised by the dewatering activity.
- s) The location and construction of groundwater extraction works that are decommissioned are to be recorded in the completion report. The method of decommissioning is to be identified in the documentation.
- t) Access to groundwater management works used in the activity is to be provided to permit inspection when required by the approval body under appropriate safety procedures.

Following excavation

- u) Following cessation of the dewatering operations, the applicant shall submit the completion report which shall include:
 - 1) detail of the volume of water taken, the precise periods and location of water taken, the details of water level monitoring in all of the relevant bores; and
 - 2) a water table map depicting the aquifer's settled groundwater condition and a comparison to the baseline conditions; and
 - 3) a detailed interpreted hydrogeological report identifying all actual resource and third party impacts, including an assessment of altered groundwater flows and an assessment of any subsidence or excessive settlement induced in nearby buildings and property and infrastructure.
- v) The completion report is to be assessed by the approval body prior to any certifying agency's approval for occupation or use of the completed construction. (DA-13/135/04)

13. The following conditions are imposed by the **NSW Police Service**:

- a)
 - i. As the proposed development may be exposed to Break and Enter Steals, Stealing, Steal from persons, Malicious Damage and Steal from Motor Vehicle offences, a closed circuit surveillance system (CCTV) which complies with the Australian Standard - Closed Circuit Television System (CCTV) AS:4806:2006 shall to be implemented to receive, hold or process data for the identification of people involved in anti-social behaviour prior to the issue of the Occupation Certificate. The system is obliged to conform with Federal, State or Territory Privacy and Surveillance Legislation;
 - ii. The CCTV system should consist of surveillance cameras strategically located in and around the development to provide maximum surveillance coverage of

the area, particularly in areas that are difficult to supervise. Cameras should be strategically mounted outside the development buildings and within the car parking areas to monitor activity within these areas. One or more cameras should be strategically mounted at entry and exit points to monitor activities around these areas (underground car park, foyer entrance); and

- iii. Digital technology should be used to receive, store and process data. Recording equipment should be secured away from public access areas to restrict tampering with the equipment and data.
 - b) Any proposed landscaping and vegetation to the street frontage should adhere to the following principles:
 - i. Shrubs bushes, plants should remain under 900mm in height;
 - ii. Branches or large trees should start at a height of two (2) metres and higher;
 - c)
 - i. Bicycle parking areas should be located within view of capable guardians. The provision of ~~covered~~ lockable racks to secure bicycles increases the effort required to commit crime; (DA-13/135/05)
 - ii. Any storage cages in the underground car park areas should not be constructed in an isolated area. CCTV cameras must cover this area, as they are easy targets when they have little supervision. Mesh ~~Solid~~-steel housing and quality key locks should be used to prevent access. (DA-13/135/05)
 - d) An Emergency control and evacuation plan which complies with the Australian Standard, Emergency Control Organisation and Procedures for Buildings, Structures and Workplace, AS:3745:2002 should be prepared and maintained by your development to assist management and staff in the event of an emergency. This standard sets out the requirements for the development of procedures for the controlled evacuation of the building, structures and workplaces during emergencies. Further information in relation to planning for emergencies can be obtained from Emergency NSW <http://www.emergency.nsw.gov.au> or Emergency Management Australia <http://www.ema.gov.au>.
14. The following conditions are imposed by **Sydney Water** and must be complied with:
- a) An extension of the wastewater system will be required from the 300mm main constructed under WO 40700, which will provide a connection point of at least one metre inside all the proposed lot boundaries.
 - b) The proposed wastewater infrastructure for this development will be sized and configured according to the Sewerage Code of Australia WSA 02-2002-2.2.
 - c) The applicant should engage a Water Servicing Coordinator to obtain a Section 73 Certificate and manage the servicing aspects of the development including building over and adjacent to Sydney Water assets.
15. The following conditions are imposed by the **Sydney Airport Corporation Limited (SACL)** and must be complied with:

- a) The PROPERTY DEVELOPMENT at 659-669 GARDENERS ROAD, MASCOT lies within an area defined in schedules of the Civil Aviation (Buildings Control) Regulations, which limit the height of structures to 50 feet (15.24 metres) above existing ground height (AEGH) without prior approval of this Corporation.
- ~~b) The Civil Aviation Safety Authority (CASA) have no objection to the erection of the building to a height of 45.5 metres above Australian Height Datum (AHD).~~
- c) The approved height is inclusive of all lift over-runs, vents, chimneys, aerials, TV antennae, construction cranes etc.
- d) Should you wish to exceed the above heights, a new application must be submitted. Should the height of any temporary structure and/or equipment be greater than 50 feet (15.24 metres) above existing ground height (AEGH), a new approval must be sought in accordance with the Civil Aviation (Buildings Control) Regulations Statutory Rules 1988 No. 161.
- e) Construction cranes may be required to operate at a height significantly higher than that of the proposed controlled activity and consequently, may not be approved under the Airports (Protection of Airspace) Regulations. SACL advises that approval to operate construction equipment (ie cranes) should be obtained prior to any commitment to construct. Information required by SACL prior to any approval is to include:
 - f) the location of any temporary structure or equipment, ie. construction cranes, planned to be used during construction relative to Mapping Grid of Australia 1994 (MGA94);
 - g) the swing circle of any temporary structure/equipment used during construction;
 - h) the maximum height, relative to Australian Height Datum (AHD), of any temporary structure or equipment ie. construction cranes, intended to be used in the erection of the proposed structure/activity;
 - i) the period of the proposed operation (ie. construction cranes) and desired operating hours for any temporary structures.
- j) Any application for approval containing the above information, should be submitted to this Corporation at least 35 days prior to commencement of works in accordance with the Airports (Protection of Airspace) Regulations Statutory Rules 1996 No. 293, which now apply to this Airport.
- k) The development is to comply with the Civil Aviation Safety Authority (CASA) requirements as outlined in the Council's Development Application Guide for Multi-Unit Residential, Commercial and Industrial.
- l) All trees to be planted shall not be capable of intruding into the Obstacle Limitation Surface when mature.

15A. The following conditions are imposed by the Civil A (CASA) and must be complied with:

- a) The building must not exceed a maximum height of 52.2 metres AHD, inclusive of all lift over-runs, vents, chimneys, aerials, antennas, lightning rods, any roof top garden plantings, exhaust flues etc.

- b) The proponent must advise Airservices at least 3 business days prior to the controlled activity commencing by emailing IFP@airservicesaustralia.com and quoting "SY-CA-471".
- c) The building must be obstacle lit with low intensity steady red lighting during the hours of darkness at the highest point of the building. Obstacle lights are to be arranged to ensure the building can be observed in a 360 degree radius as per subsection 9.4.3 of the Manual of Standards- Part 139 Aerodromes (Part 139 MOS). Characteristics for medium intensity lights are stated in subsection 9.4.6 of Part 139 MOS.
- d) The proponent must ensure the obstacle lighting has remote monitoring capability, or Sydney Airport is to monitor ongoing availability of the obstacle lighting.
- e) The obstacle lighting must be maintained in serviceable condition and any outage immediately reported to the aerodrome operator.
- f) Separate approval must be sought under the Regulations for any cranes required to construct the building. Construction cranes may be required to operate at a height significantly higher than that of the proposed controlled activity and consequently, may not be approved under the Regulations. Therefore, it is advisable that approval to operate construction equipment (i.e. cranes) should be obtained prior to any commitment to construct.
- g) At the completion of the construction of the building, a certified surveyor is to notify (in writing) the airfield design manager of the finished height of the building.

(DA-13/135/06)

PRIOR TO COMMENCEMENT OF ANY DEVELOPMENT OR WORK

16. Prior to commencement of any works on-site, a dilapidation report of the immediate adjoining properties and public infrastructure (including Council and public utility infrastructure) shall be prepared by a qualified person and submitted to Council. The report shall include records and photographs of the following area that will be impacted by the development:

- a) All properties immediately adjoining the site; and
- b) Gardeners Road.

The applicant shall bear the cost of all restoration works to buildings/ structures and public infrastructure that been damaged during the course the excavation, site clearing and site remediation works. Any damage to buildings/structures, infrastructures, roads, lawns, trees, gardens and the like shall be fully rectified by the applicant/developer, at the applicant/developer's expense. In addition, the following issues shall also be complied with:

- i. A copy of the dilapidation report together with the accompanying photographs shall be given to all immediately adjoining properties owners and public utility authorities. The report shall be agreed by all affected parties as a fair record of existing conditions prior to commencement of any works;

- ii. A second dilapidation report, including a photographic survey shall then be submitted at least one month after the completion of demolition/excavation works. A copy of the second dilapidation report together with the accompanying photographs shall be given to Council, public utilities authorities and all adjoining properties owners;
- iii. It is a condition of consent that should demolition, site clearing and site remediation works cause rise to public safety and/or workplace safety; works shall halt until absolute safety is restored;

(Note: Prior to commencement of the surveys, the applicant/ owner of the development shall advise (in writing) all property owners of buildings to be surveyed of what the survey will entail and of the process for making a claim regarding property damage. A copy of this information shall be submitted to Council.)

17.

- a) There shall be no loss of support to the Council's nature strip area as a result of the construction within the site. Details prepared by a practicing Structural Engineer of how this support will be maintained during the demolition works shall be submitted to Council prior to the commencement of works.
- b) Council's property shall be supported at all times. Where any shoring is to be supporting (or located on) Council's property, certified engineering drawings showing all details including the extent of encroachment, the type of shoring and the method of removal, shall be submitted prior to the issue of the Construction Certificate. If the shoring cannot be removed, it shall be cut to 150mm below footpath level and the gap between the shoring and any buildings shall be filled with a 5Mpa lean concrete mix.

18. Prior to the commencement of demolition work, a licensed demolisher who is registered with the WorkCover Authority must prepared a Work Method Statement to the satisfaction of the Principal Certifying Authority (Council or an accredited certifier) and a copy sent to Council (if it is not the PCA). A copy of the Statement must also be submitted to the WorkCover Authority.

The statement must be in compliance with: AS2601-1991 Demolition of Structures," the requirements of WorkCover Authority and conditions of the Development Approval, and must include provisions for:

- a) Enclosing and making the site safe, any temporary protective structures must comply with the "Guidelines for Temporary Protective Structures (April 2001)";
- b) Induction training for on-site personnel;
- c) Inspection and removal of asbestos, contamination and other hazardous materials (by appropriately licensed contractors);
- d) Dust control – Dust emission must be minimised for the full height of the building. A minimum requirement is that perimeter scaffolding, combined with chain wire and shade cloth must be used, together with continuous water spray during the demolition process. Compressed air must not be used to blow dust from the building site;
- e) Disconnection of Gas and Electrical Supply;

- f) Fire Fighting – Fire fighting services on site are to be maintained at all times during demolition work. Access to fire services in the street must not be obstructed;
 - g) Access and Egress – No demolition activity shall cause damage to or adversely affect the safe access and egress of this building;
 - h) Control of water pollution and leachate and cleaning of vehicles tyres – Proposals shall be in accordance with the “Protection of the Environmental Operations Act 1997”;
 - i) Working hours, in accordance with this Development Consent;
 - j) Confinement of demolished materials in transit;
 - k) Location and method of waste disposal and recycling in accordance with the “Waste Minimisation and Management Act 1995”;
 - l) Sewer – common sewerage system;
 - m) On site monitoring both during asbestos removal and the remainder of demolition activities.
19. To ensure that utility authorities and Council are advised of any effects to their infrastructure by the development, the applicant shall:
- a) Carry out a survey of all utility and Council services within the site including relevant information from utility authorities to determine the position and level of services;
 - b) Negotiate with the utility authorities (eg Energy Australia, Sydney Water and Telecommunications Carriers) and Council in connection with:
 - i. The additional load on the system; and
 - ii. The relocation and/or adjustment of the services affected by the construction.

Any costs in the relocation, adjustment, and provision of land or support of services as requested by the service authorities and Council are to be the responsibility of the developer.

20. Prior to demolition of any building constructed before 1970, the person acting on this consent shall ensure compliance with Australian Standard *AS2601-2001, Demolition of Structures* by a person with suitable expertise and experience. This may involve a Work Plan that identifies any hazardous materials including surfaces coated with lead paint, method of demolition, the precautions to be employed to minimize any dust nuisance and the disposal methods for hazardous materials, including:
- a) Removal, cleaning and disposal of lead-based paint shall conform to the current EPA guidelines. Demolition of materials incorporating lead is to be conducted in strict accordance with sections 1.5, 1.6, 1.7, 3.1 and 3.9 of the *AS2601-1991 Demolition of structure*.
 - b) Hazardous dust shall not be allowed to escape from the site. Any existing accumulations of dust (e.g.; ceiling voids and wall cavities) shall be removed by

the use of an industrial vacuum fitted with a high efficiency particulate air (HEPA) filter. All dusty surfaces and dust created from work is to be suppressed by a fine water spray. Water shall not be allowed to enter the street and stormwater systems. Demolition is not to be performed during high winds, which may cause dust to spread beyond the site boundaries.

- c) All contractors and employees directly involved in the removal of hazardous dusts and substances wearing protective equipment conforming to Australian Standard *AS1716 Respiratory Protective Devices* and shall adopt work practices in accordance with the requirements of WorkSafe's *Control of Inorganic Lead At Work* (NOHSC: 102(1994) and NOHSC: 2015(1994).
 - d) All lead-contaminated materials being disposed of in accordance with the Environment Protection Authorities Environmental Guidelines; *Assessment, Classification and Management of Liquid and Non Liquid Wastes (1999)* and *The Protection of the Environment Operations Act 1997 (NSW)*.
- 21.
- a) Demolition work shall be carried out in accordance with Australian Standards AS 2601-1991 Demolition of Structures and the requirements of the NSW WorkCover Authority; and
 - b) The demolisher shall comply with Australian Standard 2601 - 1993 "*Demolition of Structures*".
22. Hazardous or intractable wastes arising from the demolition process shall be removed and disposed of in accordance with the requirements of WorkCover NSW and the Department of Environment and Climate Change and Water and with the provisions of:
- a) New South Wales Occupational Health and Safety Act, 2000;
 - b) The Occupational Health and Safety (Hazardous Substances) Regulation 2001;
 - c) The Occupational Health and Safety (Asbestos Removal Work) Regulation 2001;
 - d) Protection Of the Environment Operations Act 1997 (NSW); and
 - e) Department of Environment and Climate Change Waste Classification Guidelines (2008).
23. Prior to commencement of any works, the following approvals and permits on Council's property/road reserve under Roads Act 1993 and Local Government Act 1993 shall be made and obtained from Council's Customer Services Counter:
- i. Permit to erect hoarding on or over a public place, including Council's property/road reserve;
 - ii. Permit for roads and footways occupancy (long term/ short term);
 - iii. Permit to open road reserve area, including roads, footpaths, nature strip, vehicular crossing or for any purpose whatsoever, such as relocation / re-adjustments of utility services;
 - iv. Permit to place skip/waste bin on footpath and/or nature strip;

- v. Permit to use any part of Council's road reserve or other Council lands;
- vi. Permit to stand mobile cranes and/or other major plant on public roads and all road reserve area;
- vii. (It should be noted that the issue of such permits may involve approval from RTA and NSW Police. In some cases, the above Permits may be refused and temporary road closures required instead which may lead to longer delays due to statutory advertisement requirements.)
- viii. Permit to establish "Works Zone" on public roads adjacent to the development site, including use of footpath area.

Application(s) shall be submitted minimum one (1) month prior to the planned commencement of works on the development site. The application will be referred to the Council's Traffic Engineer for approval, which may impose special conditions that shall be strictly adhered to by the applicant(s).

Copy of the approved permits shall be submitted to the Principal Certifying Authority attesting this condition has been appropriately satisfied.

24. Erosion and sediment control devices shall be installed and in function prior to the commencement of any demolition works upon the site in order to prevent sediment and silt from site works being conveyed by stormwater into public stormwater drainage system, natural watercourses, bushland, trees and neighbouring properties. In this regard, all stormwater discharge from the site shall meet the legislative requirements and guidelines. These devices shall be maintained in a serviceable condition AT ALL TIMES throughout the entire demolition, excavation and construction phases of the development and for a minimum one (1) month period after the completion of the development, where necessary.
25. The Applicant must indemnify Council against all loss of or damage to the property of others and injury or death to any persons which may arise out of or in consequence of the carrying out of the work and against all claims, demands, proceedings, costs, charges and expenses whatsoever in respect thereof or in relation thereto. In this regard, the Applicant shall take out a public liability policy during the currency of the works in the sum of not less than \$20,000,000 and to be endorsed with City of Botany Bay Council as principal, and keep such policy in force at the Applicant's own expense. A certificate from the Applicant's insurers to this effect is to be LODGED WITH COUNCIL BEFORE ANY WORK IS COMMENCED. The amount of Common Law liability shall be unlimited.
26. A sign must be erected in a prominent position on any work site on which work involved in the erection of a building is being carried out;
 - a) stating that unauthorised entry to the work site is prohibited;
 - b) showing the name of the person in charge of the work site and a telephone number at which that person may be contacted outside working hours;
 - c) the Development Approval number;
 - d) the name of the Principal Certifying Authority including an after hours contact telephone number; and
 - e) any such sign is to be removed when the work has been completed.

27. A detailed Traffic Management Plan for the pedestrian and traffic management of the site during demolition, excavation and construction shall be prepared and submitted to the relevant road authority (Council or RMS) for approval prior to commencement of any works. The plan shall:
- a) be prepared by a RMS accredited consultant.
 - b) nominate a contact person who is to have authority without reference to other persons to comply with instructions issued by Council's Traffic Engineer or the Police.
 - c) if required, implement a public information campaign to inform any road changes well in advance of each change.
 - d) Note: Any temporary road closure shall be confined to weekends and off-peak hour times and is subject to Council's Traffic Engineer's approval. Prior to implementation of any road closure during construction, Council shall be advised of these changes and Traffic Control Plans shall be submitted to Council for approval. This Plan shall include times and dates of changes, measures, signage, road markings and any temporary traffic control measures.
 - e) During construction, all works and measures shall be implemented in accordance with approved Traffic Management Plan at all times.
28. Toilet facilities are to be provided at or in the vicinity of the work site on which work involves the erection of a building is being carried out, at the rate of one toilet for every 20 persons or part of 20 persons employed at the site;
- a) Each toilet provided:
 - b) must be standard flushing toilet; and,
 - c) must be connected:
 - i. to a public sewer; or
 - ii. if connection to a public sewer is not practicable to an accredited sewerage management facility approved by the Council; or,
 - iii. if connection to a public sewer or an accredited sewerage management facility is not practicable to some other sewerage management facility approved by the Council.
 - d) The provisions of toilet facilities in accordance with this clause must be completed before any other work is commenced.
29. A detailed Construction Management Plan (CMP) shall be submitted to Council and the Principal Certifying Authority for approval prior to the commencement of any works. The plan shall address:
- a) Excavation and construction vehicles access to and egress from the site;
 - b) Parking for demolition and construction vehicles. All construction-related vehicles shall be parked on-site and no parking of these vehicles shall be allowed on Gardeners Road;

- c) Locations of site office, accommodation and the storage of major materials related to the project;
 - d) Protection of adjoining properties, pedestrians, vehicles and public assets;
 - e) Location and extent of proposed builder's hoarding and Work Zones, if there is any.
 - f) Active measures to control and suppress dust, grit and the like that are associated with construction activity.
 - g) Measures to control the arrival of plant and equipment associated with the construction process and the delivery of such plant and equipment during reasonable hours of the working day;
 - h) Public Notification where working hours are extended for a particular construction activity;
 - i) Provision of on-site car parking for employees, contractors and site personnel during the construction phase of the development; and
 - j) During construction, all works and measures shall be implemented in accordance with approved Construction Management Plan at all times.
30. During demolition, excavation, remediation and construction, the applicant shall ensure that all works and measures have been implemented in accordance with following approved plans at all times:
- a) Approved Erosion and Sediment Control Plan;
 - b) Approved Traffic Management Plan and;
 - c) Approved Construction Management Plan.
31. In order to ensure that the street trees proposed to be retained on the approved landscape plan are protected during construction, and their health and structural stability ensured, the following is required :
- a) A Consultant Arborist AQF Level 5 shall be engaged from site establishment to the post-construction period to erect tree protection zones and signage, inspect and advise on all works during the entire construction period, monitor tree health and to authorize and undertake tree canopy and root pruning where necessary only and to the minimum only so that the health or structural stability of the trees is not impacted;
 - b) All tree works and tree management shall be undertaken in accordance with the Arborist report by Landscape Matrix Pty Ltd dated 30 July 2013. For all tree root and canopy work to trees, comply with the recommendations and requirements and management plan contained within this report;
 - c) Trees to be retained during development are to be tagged with clearly visible marking tape at a height of approx. 2 metres from ground and numbered with the corresponding number in the Tree Report/Landscape Plan;

- d) Prior to commencing demolition/any works the trees are to be physically protected by fencing underneath the canopy dripline or as indicated in the Arborist's report using 1.8 metre high chainwire fence to form the Tree Protection Zone (TPZ). The fence shall remain in place until construction is complete;
- e) The area within the fencing is to be mulched with leaf mulch to a depth of 100mm and a weekly deep watering program undertaken during construction;
- f) If there is insufficient space to erect fencing in a particular area, wrap the trunk with hessian or carpet underlay to a height of 2.5 metres or to the tree's first lateral branch, whichever is greater, and affix timber palings around the tree with strapping or wire (not nails);
- g) Before any works commence on site, the Applicant is required to contact Council for an inspection of the fenced TPZ's. Council approval is required prior commencement of any work;
- h) All detailed Construction Certificate plans shall show trees to be protected and the TPZ;
- i) All TPZ's are a "No-Go" zone. There shall be no access, no stockpiling, storage or sorting of waste or building materials, no construction work, no concrete mixing, strictly no washing down of concrete mixers or tools, no chemicals mixed/disposed of, no excavation or filling, no service trenching. Any unavoidable work within the fenced zone shall be under the direction of Council's Tree Officer or Consultant Arborist;
- j) Where unavoidable foot access is required in the TPZ, provide temporary access with timber sheets to minimise soil compaction, spillage or root damage;
- k) Excavation within the canopy dripline or within an area extending 3 metres outward of the canopy dripline of any tree shall be carried out manually using hand tools to minimise root damage or disturbance and in accordance with the Arborists' report;
- l) Tree roots 40mm in diameter or greater that require pruning shall be done only under the direction of Council's Tree Officer or the consulting Arborist after a site inspection so as not to unduly impact or stress the tree;
- m) It is the Applicant's responsibility to ensure that there is no damage to the canopy, trunk or root system (including the surrounding soil) of any tree. There shall be no canopy pruning unless approval has been granted by Council's Tree Officer under separate application. Approved pruning shall be undertaken by a qualified Arborist in accordance with AS 4373;
- n) There shall be no walls retaining or otherwise, pavements, change in levels, trenching for new subsurface utilities or the location of new overhead services within the primary root zone or canopy of any tree. Any such structures in close proximity to trees must accommodate tree roots without damage or pruning;
- o) All waste concrete and debris shall be removed from areas to be landscaped on the site, not buried, to minimise soil contamination;
- p) The Applicant shall undertake any tree maintenance/remedial pruning as required by Council or the Consultant Arborist at the completion of construction;

CONDITIONS WHICH MUST BE SATISFIED PRIOR TO THE ISSUE OF THE CONSTRUCTION CERTIFICATE AS INDICATED

(heading amended DA13/135/03)

32. The City of Botany Bay being satisfied that the proposed development will increase the demand for public amenities within the area, and in accordance with Council's Section 94 Contributions Plans listed below a contribution (as indexed) of ~~\$4,803,572~~ (DA13/135/02) \$4,839,904.59 (DA-13/135/04) is required as follows:

Section 94 Development Contribution Plan 2005-2010

Residential

Community Facilities:	\$1,292,088.00
Administration:	\$38,376.00
Transport:	\$494,462.00
Open Space and Recreation:	\$1,151,612.00

Commercial

Community Facilities:	\$18,159.92	\$22,823.92
Administration:	\$2,312.82	\$2,906.82
Shopping Centre (City Wide)	\$9,808.07	\$12,327.07
Open Space and Recreation:	\$13,277.30	\$16,687.30
Section 94	Total	\$3,020,066 \$3,031,253.11

Mascot Station Precinct Plan

Residential

60 x Studios, 162 x 1 Bedrooms, 104 x 2 Bedrooms, 2 x 3 Bedrooms
\$1,835,596.68

Commercial based on ~~955sqm~~ 1,193sqm ~~\$100,580.64~~ \$125,725.80
MSP Total ~~\$1,936,177.00~~ \$1,961,322.48

Credit

Mascot Station Precinct Plan	\$129,917.00
Section 94 Development Contribution Plan 2005-2010	\$22,754.00
Credit Total	\$152,671.00

Grand total ~~**\$4,803,572.00**~~ **\$4,839,904.59**

The Section 94 Contribution of ~~\$4,803,572.00~~ \$4,839,904.59 is to be paid to Council prior to the issue of the first Construction Certificate.

Note: The Section 94 Contribution fees are subject to annual review and the current rates are applicable for the financial year in which your consent is granted. If you pay the contribution in a later financial year you will be required to pay the fee applicable at the time. (DA13/135/02)

Note: The applicant is to pay the remaining balance of the Section 94 Contributions if a portion of the contributions have been not been paid to Council. (DA-13/135/04)

33. Prior to the issue of the *relevant* Construction Certificate, detailed plans shall be submitted to and approved by Council and the Principal Certifying Authority to demonstrate compliance with the following requirements: (DA13/135/03)

- a) Demonstrate that a safe headroom clearance of 4.5m is achieved along the existing right of way (ROW) and the proposed travel path, parking and manoeuvring areas for a Medium Rigid Vehicle (MRV) and Council Garbage Truck, to the access point to Gardeners Road and also the future access point to the New Road as per AS 2890.2-2002. Evidence to be provided shall include but not be limited to a longitudinal section.
 - b) The access driveway from Gardeners Road shall be redesigned where required to demonstrate compliance with Section 3.4 of AS 2890.2-2002. Additionally, the building at the location of the future access to the new road must be designed to accommodate the future access compliance with AS 2890.2-2002. Amended swept paths and architectural plans demonstrating compliance with this requirement shall be provided.
34. Prior to the issue of the relevant Construction Certificate, detail design and construction plans in relation to the stormwater management and disposal system for the development shall be submitted to the Principal Certifying Authority and Council and Roads and Maritime for approval. The plans shall incorporate but shall not be limited to the following:
- i. An On-Site ~~Infiltration System~~ Detention Tank shall be designed according to Part 5 6 of the SMTG. The system shall be designed to detain the stormwater runoff from the site for all storm events up to and including the 1 in 100 ARI storm event.
 - ii. ~~Any stormwater discharge to the RMS or Council kerb and gutter is limited to 40L/s. If higher discharge is proposed, provision must be made to connect to the Sydney Water, RMS or Council stormwater pit and pipe system.~~ Maximum permissible site discharge (PSD) shall be based on 1 in 5 year ARI peak flow generated from the site under the State of Nature condition (i.e. site being fully grassed/turfed), rather than predevelopment condition;
 - iii. No pump out shall be used to drain seepage from the basement due to the elevated water table level. The basement shall be designed as a 'fully tanked' structure;
 - iv. The pump out can only be utilised to dispose runoff that may enter the basement carpark from the driveway access to the basement;
 - v. The pump out system from the basement carpark proposed shall discharge to the on-site ~~stormwater infiltration system~~ detention tank;
 - vi. All stormwater runoff from the site shall pass through a pollution control device capable of removing litter and sediment (e.g. Gross Pollutant Trap, (GPT)) prior to entering Sydney Water's, RMS and Council drainage systems. Details of the pollution control device shall be shown on stormwater management plan;
 - vii. The rainwater tank size shall be designed based on a supply/demand management approach. Also note that in order to contribute to environmental sustainability and apply Water Sensitive Urban Design (WSUD) principles, consideration can be given to offset the storage requirements of the onsite infiltration system provided that the rainwater tank for reuse and all downpipes are connected to the rainwater tank. The volume to be offset from the onsite infiltration system is equivalent to 50% of the size of the rainwater tanks; and
 - viii. Detailed calculations including computer modelling (electronic and paper) shall be submitted demonstrating the adequacy of the stormwater management plan in fulfilling all requirements of Council's SMTG."

Note: Detailed drawings and specifications shall be prepared by a suitably qualified and experienced civil engineer to be in accordance with Council's Development Control Plan 'Stormwater Management Technical Guidelines', AS/NSZ 3500 – Plumbing and

Drainage Code, Sydney Water regulations, the BCA and these conditions of consent. All drawings shall correspond with the approved architectural plans. (DA13/135/04)

34A.

- a) Stormwater shall be temporarily discharged to kerb outlets in Gardeners Road until completion of the drainage system in Galloway Street;
- b) Upon completion of the drainage system in Galloway Street, the kerb outlets in Gardeners Road shall be removed;
- c) The site stormwater drainage system shall be reconfigured so that all site stormwater is discharged to the Galloway Street drainage system. (DA-13/135/04)

35. To ensure satisfactory performance of the completed external public infrastructure works, a maintenance period of six (6) months shall apply to all external engineering works completed in relation to this application. The performance period shall commence from Council's Compliance Certificate issue date.

The applicant shall be liable for any part of the work which fails to perform in a satisfactory manner as outlined in Council's standard specification. A bond in the form of a cash deposit or an unconditional Bank Guarantee of sixty thousand dollars (\$60,000) shall be lodged with Council prior to issue of *the relevant* Construction Certificate to guarantee this requirement will be met. The bond will only be refunded when the works are determined to be satisfactory to Council after the expiry of the six (6) months maintenance period. (DA13/135/03)

36. Prior to the issue of the *first* Construction Certificate, the applicant is to submit payment for a Street Tree Maintenance Bond of \$10,000. The duration of the Bond shall be limited to a period of 12 months after planting of the new street trees. At the completion of the 12 month period the Bond shall be refunded pending a satisfactory inspection of the tree by Council. If the tree is found to be dead or dying then Council will forfeit all or part of the bond to replace or maintain the tree, unless the Applicant undertakes this work. (DA13/135/03)

- ~~37. Prior to the issue of the relevant Construction Certificate, subject to the approval of CASA, the applicant is to provide roof mounted solar collector panels below a height of 51m AHD, to the rooftop area of each building, of which 20% of power generated shall be returned to the Ausgrid network together with tariff rebates. Details of the panel system are to be provided with the Construction Certificate including the approval from the Civil Aviation Safety Authority. (DA13/135/03) (DA-13/135/05)~~

38. Prior to the issue of the *first* Construction Certificate, the applicant shall contact "Dial Before You Dig on 1100" to obtain a Service Diagram for, and adjacent to, the property. The sequence number obtained from "Dial Before You Dig" shall be forwarded to Principal Certifying Authority. Any damage to utilities/services will be repaired at the applicant's expense. (DA13/135/03)

39. Prior to the issue of the *first* Construction Certificate, a Soil and Water Management Plan (SWMP) shall be prepared in accordance with the Landcom *Managing Urban Stormwater – Soils and Construction* 4th Edition (2004) and submitted to the Principal Certifying Authority. (DA13/135/03)

40. This plan shall be implemented prior to commencement of any site works or activities. All controls in the plan shall be maintained at all times during the construction works. A

copy of the SWMP shall be kept on-site at all times and made available to Council Officers on request.

41. A sufficient area shall be provided onsite to enable separate stockpiling of excavated materials for sampling and analysis prior to removal or reuse on site. Details of this area shall be provided in the Soil and Water Management Plan (SWMP) prior to the release of the first construction certificate. This plan shall incorporate and reference the construction environmental management plan and address site limitations. (DA13/135/03)
42. Prior to the issue of the first Construction Certificate, an Acid Sulphate Soil Management Plan (prepared by a suitably qualified and experienced environmental/geotechnical consultant) shall be submitted to the Principal Certifying Authority. This plan shall include any site specific procedures and mitigation measures required and shall include a site analysis from a NATA registered laboratory. The plan shall provide details of the following:
- a) Site specific mitigation measures to both minimise the disturbance of acid sulphate soils as well as any measures relating to acid generation and acid neutralisation of the soil;
 - b) Management of ASS affected excavated material;
 - c) Measures taken to neutralise the acidity of any ASS affected material; and
 - d) Run-off control measures for the ASS affected soil.

All recommendations of the report shall be implemented prior to the commencement of building works.

(DA13/135/03)

43. *Prior to the release of the relevant Construction Certificate:*
- a) All plumbing stacks, vent pipes, stormwater downpipes and the like shall be kept within the building and suitably concealed from view. This Condition does not apply to the venting to atmosphere of the stack above roof level.
 - b) The basement of the building must be designed and built so that on completion, the basement is a “fully tanked” structure, i.e. it is designed and built to prevent the entry of ground water / ground moisture into the inner parts of the basement.

(DA13/135/03)

44. Prior to the issue of the first Construction Certificate the required Long Service Levy payable under Section 34 of the Building and Construction Industry Long Service Payments Act 1986 has to be paid. The Long Service Levy is payable at 0.35% of the total cost of the development, however this is a State Government Fee and can change without notice. (DA13/135/03)
45. Prior to the issue of the relevant Construction Certificate design verification is required to be submitted from a qualified designer to confirm the development is generally in accordance with the approved plans and details and continues to satisfy the design quality principles in State Environmental Planning Policy No. 65 Design Quality of Residential Flat Development. (DA13/135/03)(DA-13/135/04)

46.

- a) Prior to the issue of the *relevant* Construction Certificate, the measures required in the acoustical assessment report prepared by Acoustic Logic, dated 25 April 2013 shall be undertaken in accordance with the provisions of AS2021-2000: *Acoustics – Aircraft Noise Intrusion – Building Siting and Construction* to establish components of construction to achieve indoor design sound levels in accordance with Table 3.3 of AS2021-2000 shall be incorporated into the construction of the building; and
- b) Prior to the issue of the *relevant* Construction Certificate, a compliance report from a suitably qualified acoustic consultant shall be submitted to Council indicating any required noise mitigation measures to the approved building, as detailed in the NSW Road Noise Policy 2011 in accordance with AS 3671-1989 – *Acoustic – Road Traffic Intrusion*.

(DA13/135/03)

47.

- a) Prior to the issue of the *relevant* Construction Certificate, the measures required in the Qualitative Wind Impact Assessment, prepared by SLR Consulting Pty Ltd, dated **29 July 2013 3 November 2017** shall be detailed on the Construction Certificate plans. These shall include additional wind mitigation treatments to exposed
- b) Prior to the issue of the *relevant* Construction Certificate, a compliance report from a suitably qualified consultant shall be submitted to Council indicating any required wind mitigation measures to the approved building, as recommended in the Qualitative Wind Impact Assessment, dated **29 July 2013 3 November 2017**,
(DA13/135/03)

(DA-13/135/07)

~~48. Prior to the issue of the first Construction Certificate, a Certificate under Section 73 of the Water Board (Corporation) Act 1994 shall be obtained and submitted to Council for each stage of construction to ensure that the developer has complied with all relevant Sydney Water requirements, including appropriate connections, correctly sized amplifications, procurement of trade waste agreements, where necessary, and the payment of developer charges. (DA13/135/03)~~

~~Note: Immediate application should be made to Sydney Water for this Certificate to avoid problems in servicing the development.~~

A Section 73 Compliance Certificate under the Sydney Water Act 1994 must be obtained. Application must be made through an authorised Water Servicing Coordinator. Please refer to “Your Business” section of Sydney Water’s web site at www.sydneywater.com.au then the “e-developer” icon or telephone 13 20 92.

- i) Following application a “Notice of Requirements” will detail water and sewer extensions to be built and charges to be paid. Please make early contact with the Co-ordinator, since building of water/sewer extensions can be timed consuming and may impact on other services and building, driveway or landscape design. The Section 73 Notice of Requirements must be submitted to the Principal Certifying Authority prior to the issue of any Construction Certificate. (DA13/135/03)

49. Prior to the issue of the *relevant* Construction Certificate, the construction drawings shall indicate the following:
- a) That water will be prevented from penetrating behind fittings/linings and into concealed spaces in laundry, sanitary areas and bathrooms etc;
 - b) That floor to ceiling in laundry and bathroom areas to be tiled;
 - c) That timbers used in the development are plantation, recycled or regrowth timbers of timbers grown on Australian farms or State forest plantations and that no old growth or rainforest timbers are to be used in any circumstances; and
 - d) That plumbing to each dwelling will be separated and adequately contained to prevent noise transmission and vibration.
 - e) The rooms for the storage of garbage and recyclable materials shall be:
 - i. fully enclosed;
 - ii. adequately ventilated;
 - iii. constructed with a concrete floor, concrete or cement rendered walls coved to the floor;
 - iv. the floor shall be graded to an approved sewer connection incorporating a sump and galvanized grate cover or basket in accordance with the requirements of Sydney Water Corporation.
 - v. washing facilities shall be provided within close proximity to the garbage and recycling storage area.

(DA13/135/03)

50. A suitable intercom system linked to all units within the development shall be provided at the vehicle entrance to the development to ensure any visitors to the site can gain access to the visitor parking in the car parking area. The details of the intercom system shall be submitted to Principal Certifying Authority prior to the issue of the relevant Construction Certificate and its location and specifications endorsed on the construction drawings. (DA13/135/03)

51. Prior to the issue of the relevant Construction Certificate, the following documentation shall be submitted to Principal Certifying Authority:

- a) Longitudinal sections along centreline of all the ramps between each basement parking levels;
- b) Design certification, prepared by a suitably qualified engineer, showing the longitudinal sections shall be designed in accordance with AS2890.1 (including gradients and gradient transitions). (DA13/135/03)

52.

- a) Prior to the issue of the relevant Construction Certificate, design certification, prepared by a suitably qualified engineer shall be submitted to Principal Certifying Authority certifying the car parking area shown on the construction

plans has been designed in accordance with AS 2890.1, AS2890.2 (for loading area) and AS2890.6; and (DA13/135/03)

- b) Detailed construction plans in relation to the development shall be revised and submitted to Council for approval. The plan shall be revised to include details of any wall or fence or solid object on either side of the driveway/vehicular crossing where it meets the Council's road reserve at the boundary must comply with sight distances stipulated in AS 2890.2.
53. For any water from site dewatering to be permitted to go to stormwater, the water must meet ANZECC 2000 Water Quality Guidelines for Fresh and Marine Water for the 95% protection trigger values for Marine Water. All testing must be completed by a NATA accredited laboratory. All laboratory results must be accompanied by a report prepared by a suitably qualified and experienced person indicating the water is acceptable to be released into Councils stormwater system *prior to the issue of the first Construction Certificate*. If the groundwater does not meet these guideline levels a Trade Waste permit from Sydney Water must be sought to put the groundwater to sewer. (DA13/135/03)
54. As this development involves an excavation below the water table these works are subject to a Council Drainage Charge for discharge of site dewatering to storm water. As such a formal application is to be submitted to Council prior to the issue of the first Construction Certificate.

Note: Council will not give permission for contaminated ground water to be discharged into its stormwater system. To discharge groundwater into the Council's stormwater system the applicant must supply the following:

- a) An Application to Council for permission to discharge water from site dewatering to Council's stormwater drainage system.
- b) A copy of a current bore license from the NSW Office of Water for dewatering.
- c) A report prepared by a suitably qualified person is to be provided together with results from a NATA approved laboratory confirming that the quality of the water meets the 95% freshwater trigger values applying to typically slightly-moderately disturbed systems as detailed in the Australian and New Zealand Guidelines for Fresh and Marine Water Quality, Australian and New Zealand Environment and Conservation Council and Agriculture and Resource Management Council of Australia and New Zealand, Paper No 4, October 2000.
- d) If the groundwater is not suitable for direct disposal to the stormwater, any proposed treatment methods must be noted and accompanied by relevant documentation demonstrating the processes involved as well as engineering evidence of its applicability. (Note that Council reserves the right to refuse any proposed treatment methods. In the advent Council does not have the technical expertise to review a treatment method an independent third party review may be requested. The proponent will be required to pay for these works).

(DA13/135/03)

55. The proposed car parking facility (space size, aisle widths, headroom clearance gradients and safe sight distance etc) shall be redesigned where required to ensure all vehicles visiting the site can safely enter and leave in a forward direction in accordance with relevant sections of AS 2890. Traffic engineering certification confirming

compliance with this condition shall be submitted for approval prior to the issue of the relevant Construction Certificate. (DA13/135/03)

56. In order to maximise visibility in the basement car parks, the ~~ceilings shall be painted white~~ lighting in the basement should exceed Australian Standard requirements. This requirement shall be reflected on the relevant Construction Certificate plans. (DA13/135/03) (DA-13/135/05)
57. *Prior to the issue of any relevant Construction Certificate*, the fire hydrant and booster assembly are required to be housed within an external façade/wall of the building or elsewhere within the building structure and shall be enclosed/screened with doors to Council approval. (DA13/135/03)
58. *Prior to the issue of any relevant Construction Certificate*, the public area of the residential parts of each building must be designed by a practicing Interior Designer or other appropriately qualified person and include (but not limited to) contrasting colour schemes, artwork surface finishes, and timber mid rails/skirting boards within public area/corridors, etc. (DA13/135/03)
59. *Prior to the issue of any relevant Construction Certificate*, any air conditioning units are to be located so that they are not visible from the street or public place and are not obscure windows/window frames or architectural features of the development. (DA13/135/03)
60. Prior to the issue of the relevant Construction Certificate, a public domain improvements plan shall be submitted for approval by Council for Gardeners Road and New Street. The Plan shall be undertaken by a suitably experienced Landscape Architect and shall include but not be limited to new street tree planting, footpath paving (segmental/other), street tree pit treatments and tree guards, street furniture, in ground landscaping, amenity area lighting. The Plan shall be in accordance with Council's Draft Mascot Station Precinct Public Domain Manual and any other Council specification or requirement. Civil drawings shall be included detailing levels and detailed footpath construction sections in accordance with Council's Engineering Services requirements. The preparation of the public domain plan shall include consultation with Council's Landscape Architect. (DA13/135/03)
61. Prior to the *relevant* issue of the Construction Certificate, the concept landscape documentation submitted by 360 Degrees shall be the subject of detailed, amended landscape documentation to be submitted to and approved by the City of Botany Bay's Landscape Architect. The following amendments to the concept plan are to be incorporated in the detailed documentation:
 - a) A planting plan showing all plant locations, groupings and centres. There is to be a dense layered planting treatment of trees, shrubs and groundcovers in all landscaped areas;
 - b) A plant schedule listing all plants by botanical name, total plant numbers, plant spacing, pot sizes and staking;
 - c) Amend the street tree selection to incorporate *Corymbia maculate* and setback tree to *Waterhousia 'Green Avenue'*
 - d) Incorporate addition small to medium trees (including mix of evergreen species) within the communal open spaces. A row of small to medium trees (i.e. *Elaeocarpus eumundii*) shall be provided along both side setbacks of the Level

2 landscape area at approximately 6-8 metre spacing to provide visual separation and screening to adjacent buildings.

- e) Incorporate sufficient additional canopy tree planting within the central open space area to ameliorate the development;
- f) All planter beds must be no less than the minimum soil depths as required by SEPP 65 (i.e. large trees – 1.3m, medium – 1m, small – 0.8m, shrubs – 500-600mm, groundcover – 300-450mm, turf – 100-300mm);
- g) Show the location of underground stormwater tanks, ensuring deep soil availability for landscaping and tree planting is maximised.
- h) Specifications detailing soil and mulch finishes, root barriers, irrigation, edging and other landscape hardworks such as retaining walls;
- i) Areas of paving, schedule of materials, edge treatments and sectional construction details.
- j) All fencing, privacy screening and pergolas including elevations and materials.

(DA13/135/03)

62. *Prior to the issue of the relevant Construction Certificate*, the development shall make provision for the following car parking allocations:

Car Parking Rates	Required
1 space per studio/1 bedroom unit	222 spaces
2 spaces per 2/3 bedroom unit	212 spaces
1 visitor space per 10 dwellings	33 spaces
Commercial spaces	14 spaces
TOTAL REQUIRED	481
TOTAL PROVIDED (Prior to New Street Construction)	505
TOTAL PROVIDED (After New Street Construction)	481

This requirement shall be reflected on the relevant Construction Certificate plans. The approved car parking spaces shall be maintained to the satisfaction of Council, at all times. (DA13/135/03)(DA-13/135/04)

63. Plans submitted with the relevant Construction Certificate shall demonstrate compliance with the following:

- a) All residential unit size excluding balconies as minimum must be as following:
 - i. Studio = 60m²
 - ii. 1 bedroom = 75m²
 - iii. 2 bedroom = 100m²
 - iv. 3 bedroom = 130m²

- b) No consent is given or implied for the room layouts as shown on the architectural plans, Drawing No. DA14 to DA25 (Rev H) dated 24 July 2014. In this regard, the plans submitted with the *relevant* Construction Certificate shall generally incorporate the approved Unit Layout in accordance with Drawing No. DA101 to DA104 and DA06 to DA108 (Rev B) dated 24 July 2014 and DA105 (Rev C) dated 1 July 2016. (DA-13/135/04) (DA-13/135/05)
- c) Adaptable units must be provided in accordance with Part 3C-Access and Mobility of Botany Bay Development Control Plan 2013. Such units shall be designed in accordance with AS 4299 and BBDCP 2013 (Part 3C). Details to be submitted with the *relevant* Construction Certificate. (DA13/135/03)

PRIOR TO THE COMMENCEMENT OF ANY DEVELOPMENT OR WORK

(Heading deleted) (DA13/135/03)

DURING WORKS

64.

- a) All management measures recommended and contained within the Soil and Water Management Plan (SWMP) submitted as part of the construction certificate shall be implemented in accordance with the *Landcom Managing Urban Stormwater – Soils and Construction* 4th Edition (2004). This plan shall be implemented prior to commencement of any site works or activities. All controls in the plan shall be maintained at all times and made available to council officers on request;
- b) Erosion and sediment control devices shall be installed and functioning prior to the commencement of any demolition, excavation or construction works upon the site in order to prevent sediment and silt from site works (including demolition and/or excavation) being conveyed by stormwater into public stormwater drainage system, natural watercourses, bushland and neighbouring properties. In this regard, all stormwater discharge from the site shall meet the legislative requirements and guidelines;
- c) These devices shall be maintained in a serviceable condition AT ALL TIMES throughout the entire demolition, excavation and construction phases of the development and for a minimum one (1) month period after the completion of the development, where necessary; and
- d) The vehicular entry/exits to the site must be protected from erosion and laid with a surface material which will not wash into the street drainage system or watercourse.

65. If the work involved in the construction of a building:

- a) likely to cause pedestrians or vehicular traffic in a public place to be obstructed or rendered inconvenient; or,
- b) involves the enclosure of a public place:

- i. a hoarding or fence must be erected between the work site and the public place.
 - ii. If necessary an awning is to be erected sufficient to prevent any substance from or in connection with the work falling into the public place.
 - iii. The work site must be kept lit between sunset and sunrise if it is likely to be hazardous to person(s) in the public place.
 - iv. Any such hoarding, fence or awning is to be removed when the work has been completed.
 - c) Suitable consent shall be obtained from Council prior to the erection of any hoarding at the property.
66. All remediation work must be carried out in accordance with:
- a) NSW Office of Environment and Heritage (OEH) 'Contaminated Sites – Guidelines for Consultants Reporting on Contaminated Sites';
 - b) NSW Environment Protection Authority (NSW EPA) guidelines under the Contaminated Land Management Act 1997;
 - c) State Environmental Planning Policy 55 (SEPP55) – Remediation of Land; and
 - d) the *Remedial Action Plan* (Report Ref: E27228KGrpt2-RAP) completed by EIS and dated 7 April 2014.
- 67.
- a) Any new information that comes to light during demolition, excavation, remediation and or construction which has the potential to alter previous conclusions about site contamination and remediation must be notified to Council;
 - b) Results of the monitoring of any field parameters such as soil, groundwater, surface water, dust or noise measurements shall be made available to Council Officers on request throughout the remediation and construction works.
68. All materials excavated from the site (fill or natural) shall be classified in accordance with the NSW Department of Environment and Climate Change (DECC) Waste Classification Guidelines (2008) prior to being disposed of to a NSW approved landfill or to a recipient site.
69. The management of potential and actual acid sulfate soils shall be conducted in accordance with all recommendations within the Acid Sulfate Soil Management Plan submitted prior to the construction certificate including:
- a) Site specific mitigation measures to both minimise the disturbance of acid sulfate soils as well as any measures relating to acid generation and acid neutralisation of the soil;
 - b) Management of ASS affected excavated material;
 - c) Measures taken to neutralise the acidity of any ASS affected material; and

- d) Run-off control measures for the ASS affected soil.
70. The land to which this Consent relates must be fenced and enclosed to protect the entry or access to the land and site by lawful persons. The fencing must be in place before demolition *or excavation* works commence. (DA13/135/03)
71. Throughout the construction period, Council's warning sign for soil and water management shall be displayed on the most prominent point of the building site, visible to both the street and site workers. A copy of the sign is available from Council's Customer Service Counter.
72. During demolition, *excavation* and construction works, the applicant/builder is required to ensure the protection and preservation of all boundary fencing or boundary walls between the subject site and adjoining properties. Any damage caused as a result of such works will be at the full cost of the applicant/builder. (DA13/135/03)
73. The Applicant shall conduct all demolition, *excavation and* construction and related deliveries wholly on site. If any use of Council's road reserve is required then separate applications are to be made at Council's Customer Services Department. (DA13/135/03)
74. All vehicles transporting soil, sand or similar materials to or from the site shall cover their loads at all times.
- 75.
- a) Existing structures and or services on this and adjoining properties shall not be endangered during any demolition *and excavation* associated with the above project. The Applicant is to provide details of any stabilisation works required to adjacent developments to Council. (DA13/135/03)
- b) As the development involves an excavation that extends below the level of the base of the footings of a building or road on adjoining land, the person having the benefit of the development consent must, at the person's own expense:
- i. Protect and support the adjoining premises from possible damage from the excavation, and
- ii. Where necessary, underpin the adjoining premises to prevent any such damage.
- iii. Must at least 7 days before excavating below the level of the base of the footings of a building on an adjoining allotment of land, give notice of his intention to do so to the owner of the adjoining allotment of land and, furnish particulars of the excavation to the owner of the building being erected or demolished.
76. All services (Utility, Council, etc) within the road reserve (including the footpath) shall be relocated/adjusted to match the proposed/existing levels as required by the development.
77. All works carried out on the public roads shall be inspected and approved by Council's engineer. Documentary evidence of compliance with Council's requirements shall be obtained prior to proceeding to the subsequent stages of construction, encompassing not less than the following key stages:

- a) Initial pre-construction on-site meeting with Council's engineers to discuss concept and confirm construction details, traffic controls and site conditions/constraints prior to commencement of the construction of the civil works associated with the road widening;
- b) Prior to placement of concrete (kerb and gutter and footpath);
- c) Prior to construction and placement of road pavement materials; and
- d) Final inspection.

Note: Council's standard inspection fee will apply to each of the above set inspection key stages. Additional inspection fees may apply for additional inspections required to be undertaken by Council.

78. The operation shall not give rise to offensive odour or other air impurities in contravention of the Protection of the Environment Operations Act 1997. The Principal contractor shall ensure that all practical means are applied to minimise dust and odour from the site. This includes:

- a) Covering excavated areas and stockpiles;
- b) The use of fine mists of hydrocarbon mitigating agents on impacted stockpiles or excavation areas;
- c) Maintenance of equipment and plant to minimise vehicle exhaust emissions;
- d) Erection of dust screens on the boundary of the property and/or closer to potential dust sources;
- e) All loads entering or leaving the site are to be covered;
- f) The use of water sprays to maintain dust suppression; and
- g) Keeping excavated surfaces moist.

79.

- a) In order to prevent vehicles tracking soil or other materials onto public roads and washing of materials into the street drainage system or watercourse, during excavation, construction and deliveries, access to the site shall be available in all weather conditions. The area shall be stabilised and protected from erosion;
- b) Concrete trucks and any other trucks that used for the transportation of building materials or similar, shall not traffic soil cement or other materials onto the road reserve. Hosing down of vehicle tyres shall only be conducted in a suitable off-street area where wash waters do not enter the stormwater system or enter Council's land;
- c) Shaker pads are to be installed at the entry/exit points to the site to prevent soil material leaving the site on the wheels of vehicles and other plant equipment.
- d) Building operations such as brick cutting, washing tools or brushes and mixing mortar shall not be carried out on public roadways or footways or in any other

locations which could lead to the discharge of materials into the stormwater drainage system or onto Council's lands;

- e) Hosing down or hosing/washing out of any truck (concrete truck), plant (eg concrete pumps) or equipment (eg wheelbarrows) on Council's road reserve or other property is strictly prohibited. Fines and cleaning costs will apply to any breach of this condition.
- f) During construction works the area in front of the premises and for the full width of the site, be maintained at all times and kept clean and tidy.
- g) The operations of the site shall be conducted in such a manner as not to interfere with or materially affect the amenity of the neighbourhood by reason of noise, vibration, odour, fumes, vapour, steam, soot, ash, dust, particulate matter, waste water, waste products or other impurities which are a nuisance or injurious to health.
- h) All possible and practicable steps shall be taken to prevent nuisance to the inhabitants of the surrounding neighbourhood from wind-blown dust, debris, noise and the like.

80. The Development is to be constructed to meet the following construction noise requirements:

a) Construction Noise

- i. Noise from construction activities associated with the development shall comply with the NSW Environment Protection Authority's Environmental Noise Manual – Chapter 171 and the Protection of the Environment Operations Act 1997.

b) Level Restrictions

i. Construction period of 4 weeks and under:

- 1. The L10 sound pressure level measured over a period of not less than 15 minutes when the construction site is in operating must not exceed the background level by more than 10dB(A).

ii. Construction period greater than 4 weeks and not exceeding 26 weeks:

- 1. The L10 sound pressure level measured over a period of not less than 15 minutes when the construction site is in operating must not exceed the background level by more than 10 dB(A).

c) Time Restrictions

- i. Monday to Friday 07:00am to 06:00pm;
- ii. Saturday 08:00am to 04:00pm
- iii. No Construction to take place on Sundays or Public Holidays.

d) Silencing

- i. All possible steps should be taken to silence construction site equipment.
81. During *excavation*, remediation and construction, care must be taken to protect Council's infrastructure, including street signs, footpath, kerb, gutter and drainage pits etc. Protecting measures shall be maintained in a state of good and safe condition throughout the course of construction. The area fronting the site and in the vicinity of the development shall also be safe for pedestrian and vehicular traffic at all times. Any damage to Council's infrastructure (including damage caused by, but not limited to, delivery vehicles, waste collection, contractors, sub-contractors, concrete delivery vehicles) shall be fully repaired in accordance with Council's specification and AUS-SPEC at no cost to Council. (DA13/135/03)
82. To prevent contaminated soil being used onsite and to ensure that it is suitable for the proposed land use, all imported fill shall be appropriately certified material and shall be validated in accordance with the:
- a) Office of Environment and Heritage (OEH) approved guidelines; and
 - b) Protection of the Environment Operations Act 1997; and
 - c) Protection of the Environment Operations (Waste) Regulation 2005.
- All imported fill shall be accompanied by documentation from the supplier which certifies that the material has been analysed and is suitable for the proposed land use.
83. The principal contractor or owner builder must install and maintain water pollution, erosion and sedimentation controls in accordance with:
- a) The Soil and Water Management Plan;
 - b) "Managing Urban Stormwater - Soils and Construction" (2004) Landcom ('The Blue Book'); and
 - c) Protection of the Environment Operations Act 1997.
84. The following shall be complied with:
- a) The construction of the premises shall not give rise to transmission of vibration at any affected premises that exceeds the vibration in buildings criteria outlined in the NSW Environmental Noise Control Manual;
 - b) Vibration levels induced by the demolition and construction activities shall not exceed 1mm/sec peak particle velocity (ppv) when measured at the footing of any occupied building.
 - c) Vibration levels induced by the demolition and construction activities shall not exceed 3mm/sec peak particle velocity (ppv) when measured at the footing of any unoccupied building.
 - d) The upper noise level from the demolition and construction operations measured over a period of 10 minutes must not exceed the background noise level by more than 10dB(A).

CONDITIONS WHICH MUST BE SATISFIED PRIOR TO ISSUE OF THE OCCUPATION CERTIFICATE

85. Prior to the issue of any Occupation Certificate the legal right to be obtained or written consent and agreement from the beneficiary of the Right-of-way shall be provided indicating concurrence to the proposed development access arrangement, including acceptance of any likely access interruptions and/or impact that may arise during the construction phase and the future operation.
86. Prior to the issue of any Occupation Certificate the person who is entitled to act on this consent must give to Council in writing an irrevocable offer to enter into a Deed of Agreement, the terms of which must provide a process to:-
 - a) Extinguish the Right of Way and infill the temporary vehicular access from Gardeners Road with a commercial land use together with all the necessary building work to allow the space to be adapted for that purpose or other such arrangement as agreed to by Council or determined by legal jurisdiction; and
 - b) Dedicate land to be occupied for the New Street to Council, without cost to Council, together with proportional costs for its design and construction.
87.
 - a) Prior to the issue of the Occupation Certificate, Lot 1 DP 797133, Lot 1 DP 534350 and Lot 31 DP 789177 shall be consolidated into one title. The linen plans for the consolidation shall be registered with Land & Property Information.
 - b) Prior to the issue of an Occupation Certificate a Section 73 Compliance Certificate under the Sydney Water Act 1994 must be obtained. (DA13/135/03)
88. To ensure the constructed On Site Infiltration System, water quality management system including rainwater tanks and WSUD system will be maintained in operable condition a Positive Covenant under Section 88 E of the Conveyancing Act 1919, shall be created and registered on the subject land requiring the proprietor of the land to maintain the system in a satisfactory working order. The terms of the 88 E instruments are to be generally in accordance with the Council's draft terms for Maintenance of Drainage Systems and Proof of registration at the Lands and Property Information Office shall be submitted to the Principal Certifying Authority prior to issue of the Occupation Certificate.

Note: The covenant is to be submitted to Council for approval prior to lodgement with the Land and Property Information Service of NSW
89. All vehicular crossings are to be constructed prior to the issuing of Occupation Certificate (or the completion of work or the use of the building). Accordingly, the applicant shall make a separate application to Council's Customer Service Counter to construct (or reconstruct) a vehicular crossing (either using Council or own forces) to all proposed vehicular entry points to the site. This work shall also include the removal and replacement of all redundant vehicular crossings with vertical concrete kerb and gutter with the disturbed areas restored to Council's satisfaction.
90. *Prior to issue of the Occupation Certificate*, engineering certification shall be submitted to the Principal Certifying Authority confirming the following:
 - a) Site stormwater drainage system has been constructed in accordance with approved plans and Botany Council's Stormwater Management Technical Guidelines (SMTG).

- b) Certification from Council confirming all external public infrastructure engineering works have been completed to Council satisfaction.

(DA13/135/03)

91.

- a) Prior to the issue of the Occupation Certificate, the development is to be constructed to meet the requirements detailed by the acoustic assessment report prepared by Acoustic Logic, dated 25 April 2013, received by Council 2 August 2013; and
- b) All acoustic work including that acoustic work required at Condition No. 46 shall be completed prior to the issue of the Occupation Certificate and validated by a qualified acoustic engineer in accordance with AS 2021-2000 and other relevant standards.
- c) *Prior to the issue of the Occupation Certificate, a survey report must be submitted to Council to verify that Condition 4(a) above has been complied with. (Condition moved) (DA13/135/03)*

92.

- a) Prior to the issue of the Occupation Certificate, the development is to be constructed to meet the requirements detailed by the Qualitative Wind Impact Assessment, prepared by SLR Consulting Pty Ltd, dated 1 April 2014, received by Council 14 April 2014; and
- b) All wind mitigation measures required by the report at Condition No. 47 shall be completed and validated by a person with appropriate qualifications and experience.

93. Prior to the issue of the Occupation Certificate, the following is to be complied with:

- a) A Plan of Dedication shall be registered with the Department of Lands for the dedication of the new public road, at no cost to Council. The area of the land to be dedicated shall be the full length of the southern property boundary for a width of 9 metres as shown on the stamped approved plans. A copy of the registered document shall be submitted to Council for record purposes.
- b) Replace all the existing above ground electricity and telecommunication cables to underground cables within the site and road reserve area fronting Gardeners Road in accordance with the guidelines and requirements of the relevant utility authorities. The applicant shall bear all the cost of the construction and installation of the cables and any necessary adjustment works. These works and payments shall be completed prior to the issue of the Occupation Certificate.
- c) Provide appropriate and suitable street lighting to a high decorative standard to the Gardeners Road street frontage of the site, so as to provide safety and illumination for residents of the development and pedestrians in the area. All street lighting shall comply with relevant electricity authority guidelines and requirements.
- d) The public domain shall be upgraded with new paving and street tree planting, to be installed by the Applicant at the Applicant's expense in accordance with the

approved Public Domain Plan. All improvements shall be in accordance with Council's Landscaping Engineering specifications and requirements, and shall be constructed and completed prior to the issue of an Occupation Certificate.

- e) New street trees at the pot size specified shall be installed in the accordance with the approved Public Domain Plan. The trees shall be sourced from a reputable supplier that grows stock to the NATSPEC specifications. A Dial-Before-You-Dig enquiry is required prior to all planting - Council is not liable for any damage to subsurface infrastructure during public domain works. Two hold point inspections are required: prior planting trees to ensure plant stock is suitable and post-planting.
 - f) The public footpaths in Gardeners Road shall be constructed in accordance with Council specifications and the Draft Public Domain Manual. The footpath dimensions, location, paver type and construction methods shall be in accordance with these specifications. Hold points and Council inspections are required after formwork setback and to prior pouring the concrete blinding slab, at the commencement of paving works and at final completion as a minimum. Pavers shall be ordered allowing for adequate lead time for manufacture (10-12 weeks).
94. Prior to the issue of any Occupation Certificate, landscaped areas on the property and in the public domain shall be installed and maintained in accordance with the Council approved amended, detailed landscape documentation, the conditions of consent (inclusive of the landscape amendments required) and Council's DCP at all times. An experienced Landscape Contractor shall be engaged to undertake the landscaping work and shall be provided with a copy of both the approved amended landscape drawing and the conditions of approval to satisfactorily construct the landscape to Council requirements. The contractor shall be engaged for a minimum period of 26 weeks from final completion of landscaping for maintenance and defects liability, replacing plants in the event of death, damage, theft or poor performance.
95. Rigid polyethylene sheet type tree root barriers shall be installed alongside the kerb and footpath edge for all new street trees for a depth of 900mm, for 3 metres each side of the tree centre and shall be located 150mm inward of the footpath and kerb edge, or any other built element. Root deflectors/directors surrounding the rootball are not permissible. The Applicant is required to contact Council's Landscape Architect for an inspection of root barriers located within the public domain prior to backfilling and turfing.
96. To ensure satisfactory growth and maintenance of the landscaping, a fully automatic drip irrigation system is required to all site boundary landscape setbacks and frontages the communal/public open space areas, installed by a qualified landscape contractor. The system shall provide full coverage of all planted areas with no more than 300mm between drippers, automatic controller and backflow prevention device and shall be connected to a recycled water source, where provided. Irrigation shall comply with both Sydney Water and Council requirements as well as Australian Standards, and be maintained in effective working order at all times.
97. Planter boxes constructed over a concrete slab shall be built in accordance with the following requirements:
- a) Ensure soil depths in accordance with Council's DCP Part 3L. The base of the planter must be screeded to ensure drainage to a piped internal drainage outlet of minimum diameter 90mm, with no low points elsewhere in the planter. There are to be no external weep holes;

- b) A concrete hob or haunch shall be constructed at the internal join between the sides and base of the planter to contain drainage to within the planter;
- c) Planters are to be fully waterproofed and sealed internally with a proprietary sealing agent and applied by a qualified and experienced tradesman to eliminate water seepage and staining of the external face of the planter. All internal sealed finishes are to be sound and installed to manufacturer's directions prior to backfilling with soil. An inspection of the waterproofing and sealing of edges is required by the Certifier prior to backfilling with soil;
- d) Drainage cell must be supplied to the base and sides of the planter to minimize damage to the waterproof seal during backfilling and facilitate drainage. Apply a proprietary brand filter fabric and backfill with an imported lightweight soil suitable for planter boxes compliant with AS 4419 and AS 3743. Install drip irrigation including to lawns;
- e) Finish externally with a suitable paint, render or tile to co-ordinate with the colour schemes and finishes of the building.

98.

- a) ~~The five hundred and five (505) car parking spaces prior to the construction of New Street and the four hundred and eighty five one (481) car parking spaces after the construction of Galloway Street shall be made available to residents and visitors at all times, with such spaces being clearly marked and signposted prior to issue of the Occupation Certificate;~~
- b) ~~The allocation of the car parking for Stage 1 shall be as follows:~~
 - i. ~~Each studio/one (1) bedroom unit shall be allocated 1 car parking space;~~
 - ii. ~~Each two (2)/three (3) bedroom unit shall be allocated 2 car spaces;~~
 - iii. ~~Thirty eight (38) car spaces shall be allocated to the commercial tenancies; and~~
 - iv. ~~Thirty three (33) visitor car spaces shall be provided.~~
- c) The allocation of the car parking for ~~Stage 2~~ shall be as follows:
 - i. Each studio/one (1) bedroom unit shall be allocated 1 car parking space;
 - ii. Each two (2)/three (3) bedroom unit shall be allocated 2 car spaces;
 - iii. Fourteen (14) car spaces shall be allocated to the commercial tenancies; and
 - iv. Thirty three (33) visitor car spaces shall be provided. (DA-13/135/04)

99. Street numbers shall be clearly displayed with such numbers being of contrasting colour and adequate size and location for viewing from the footway and roadway. Details of street numbering shall be submitted to Council for approval prior to the issue of the Construction Certificate.

100. Prior to the issue of the Occupation Certificate, documentation from a practising civil engineer shall be submitted to the Principal Certifying Authority certifying that the car

parking area has been constructed generally in accordance with the approved construction plan(s) and comply with AS2890.1, AS2890.2 and AS2890.6 requirements. The internal parking facilities shall be clearly designated, sign posted and line marked. Signage and line marking shall comply with the current Australian Standards.

101. A Certificate of Survey from a Registered Surveyor shall be submitted to the Principal Certifying Authority to the effect that the maximum Floor Space Ratio (FSR) of ~~{3.3:1~~ ~~3.35:1 on completion of Stage 1 and 3.34:1~~ ~~3.36:1 on completion of Stage 2}~~ ~~:1~~ 3.83:1 (including corridors) and maximum height of 45.5 metres for the North Tower and 45.3 metres for the South Tower (when calculated in accordance with the provisions of Botany Bay Local Environmental Plan 2013) as approved under this Development Application, has been strictly adhered to and any departures are to be rectified in order to issue the Occupation Certificate. (DA-13/135/04)(DA-13/135/05)
102. The following shall be complied with prior to the issue of the Occupation Certificate:
 - a) A new vehicular crossing including layback and/or gutter and any associated road restoration shall be constructed in accordance with Council's requirements. The applicant shall make a separate application to Council's Customer Service Counter for the construction/ reconstruction of vehicular crossing (either by Council or own forces) to the vehicular entry point of the site as shown on the submitted approved plan.
 - b) The crossing shall be able to accommodate the turning movement of Medium Rigid Vehicle (MRV) entering and leaving the site and at 90° to the kerb and gutter in plain concrete. All adjustments to the nature strip, footpath and/or public utilities' mains and services as a consequence of the development and any associated construction works shall be carried out at the full cost to the Applicant.
 - c) The redundant vehicular crossing, together with any necessary works shall be removed and the footpath, nature strip and kerb and gutter shall be reinstated in accordance with Council's specification.
 - d) Written confirmation / completion certificate obtained from Council.
 - e) Inspection report (formwork and/or final) for the works on road reserve obtained from Council's engineer.
 - f) A copy of the approved public domain civil works plans showing Work-as-Executed details (together with an electronic copy) prepared by a registered surveyor.
 - g) Driveways and vehicular access paths shall be designed and constructed to comply with the minimum requirements (including changes of grade) of AS/NZS 2890.1.
103. Prior to the issue of the Occupation Certificate, a Certificate of Survey from a Registered Surveyor shall be submitted to the Principal Certifying Authority to the effect that all reduced levels shown upon the approved plans, with relation to drainage, boundary and road reserve levels, have been strictly adhered to as well as the location of the building (when complete) in relation to the boundary limits of the allotment.
104. The applicant is responsible for the installation and protection of all regulatory/ parking / street signs fronting the property. Any damaged or missing street signs as a

consequence of the development and associated construction works shall be replaced at full cost to the applicant.

105. Prior to the issue of the Occupation Certificate:

- a) the construction of the stormwater drainage system of the proposed development shall be generally in accordance with the approved stormwater management construction plan(s), Council's 'Guidelines for the Design of Stormwater Drainage Systems within City of Botany Bay', AS/NSZ 3500 – Plumbing and Drainage Code and the BCA. All downpipes shall be located within the property boundaries; and
- b) documentation from a practising civil engineer shall be submitted to the Principal Certifying Authority certifying that the stormwater drainage system has been constructed generally in accordance with the approved stormwater management construction plan(s) and accepted practice.

106. Any damage not shown in the dilapidation report required under Condition No. 16 submitted to Council before site works have commenced, will be assumed to have been caused as a result of the site works undertaken and must be rectified at the applicant's expense, prior to the issue of the Occupation Certificate.

107. The Council nature strips shall be suitably replaced in accordance with Council Specification and the approved landscape documentation at the completion of construction work and at the Applicant's expense.

108. Prior to the issue of the Occupation Certificate: the footpath at the commercial tenancy frontages must for reasons of public safety and presence be illuminated between sunset one day and sunrise the day following - 7 days a week and in accordance with the following standard:

- a) Lighting is to comply with the requirement for pedestrian areas in the current AS/NZS 1158;
- b) Lighting must be recessed into the facade;
- c) All associated wiring and conduits are to be completely concealed; and
- d) Light fittings should be readily accessible to support their regular maintenance.

109. Prior to the issue of the Occupation Certificate:

- a) Lighting (lux) levels for this development must include the installation of low glare/high uniformity lighting levels in line with Australian Standard AS:1158. Lighting sources should be compatible with requirements of any surveillance system installed within the development. (Poor positioning choices in relation to light can cause glare on the surveillance screens). The luminaries (light covers) should be designed to reduce opportunities for malicious damage. Lighting within the development needs to be checked and maintained on a regular basis. A limited amount of internal lighting should be left on at night to enable patrolling police, security guards and passing people to monitor activities within the premises;

- b) Any lighting on the site shall be designed so as not to cause nuisance to other residences in the area or to motorists on nearby roads, and to ensure no adverse impact on the amenity of the surrounding area by light overspill; and
 - c) All lighting shall comply with AS4282-1997 Control of the obtrusive effects.
110. A Stage 4 – Site Validation Report (SVR) shall be prepared by a suitably qualified contaminated land consultant and shall be in accordance with:
- a) NSW Office of Environment and Heritage (OEH) ‘Contaminated Sites – Guidelines for Consultants Reporting on Contaminated Sites’;
 - b) NSW Environment Protection Authority (NSW EPA) approved guidelines under the Contaminated Land Management Act 1997; and
 - c) State Environmental Planning Policy 55 (SEPP55) – Remediation of Land.

The site validation report shall provide a notice of completion of remediation works, whether there are any ongoing site management requirements and a clear statement on the suitability of the proposed site use. The report shall be submitted to the Principal Certifying Authority (and the Council if the Council is not the Principal Certifying Authority for review and concurrence). The report is to be submitted after completion of remediation works.

111. To ensure that the site is suitable for the proposed use, a Site Audit Statement (SAS) completed by an accredited site auditor under the *Contaminated Land Management Act 1997* shall be submitted to Council clearly demonstrating that the site is suitable for the proposed development. This shall be provided prior to the release of the Occupation Certificate

Any conditions imposed on the SAS shall form part of this consent. The accredited site auditor shall provide Council with a copy of the Site Audit Report (SAR) and Site Audit Statement (SAS) prior to the issuing of the Occupation Certificate. In circumstances where the SAS conditions (if applicable) are not consistent with the consent, a Section 96 application pursuant to the *Environmental Planning & Assessment Act 1979* shall be submitted to ensure that they form part of the consent conditions.

112.

- a) Prior to use and occupation of the building an Occupation Certificate must be obtained under Section 109C(1)(c) and 109M of the Environmental Planning and Assessment Act 1979.
- b) Condition Numbers 6 and 85 to 112 of this consent are pre-conditions to the issue of the Occupation Certificate.

CONDITIONS WHICH MUST BE SATISFIED PRIOR TO ISSUE OF SUBDIVISION CERTIFICATE

113. Submission of a subdivision certificate application accompanied by a linen plan with six (6) copies and appropriate fees.
114. Prior to the issue of Subdivision Certificate, a Certificate of Survey from a Registered Surveyor shall be submitted to the Principal Certifying Authority showing all the structures are wholly located within the property boundary.

115. A Positive Covenant and Restriction on Use of the land shall be created to all proposed lots to ensure that car parking for the residential part is not to be to sublet or used for any other purposes.
116. The subdivision application must be accompanied by a formal copy of the by-laws which shall be in accordance with the plans and documentation approved under this Consent and must also include the following:
- a) Responsibilities with regard to the ongoing maintenance of the building and landscaped areas at the property in accordance with the plans and details approved under Development Consent No. 13/135.
 - b) Responsibilities with regard to the maintenance of artificial features at the property in accordance with the plans and details approved under Development Consent No. 13/135.
 - c) Responsibilities regarding the maintenance of the car wash bays the Owners Corporation / building owner.
 - d) Responsibilities for ensuring owners and/or tenants have adequate and hygienic disposal and collection arrangements and for ensuring the waste storage area is appropriately maintained and kept in a clean and safe state at all times in accordance with the Plan of Management required under the conditions of this consent.
 - e) Responsibilities to ensure that receptacles for the removal of waste, recycling etc. are put out for collection between 4.00pm and 7.00pm the day prior to collection, and, on the day of collection, being the day following, returned to the premises by 12.00 noon;
 - f) Responsibilities to ensure that wastewater and stormwater treatment devices (including drainage systems, sumps and traps) are regularly maintained in order to remain effective. All solid and liquid wastes collected from the devices shall be disposed of in a manner that does not pollute waters and in accordance with the Protection of the Environment Operations Act 1997.
 - g) The Owners Corporation/Executive Committee obligations under clauses 177, 182, 183, 184, 185 and 186 of the Environmental Planning and Assessment Regulation 2000.
 - h) The linen plan must include details of any easements, encroachments, rights of way, including right of footway, restriction as to user or positive covenants and include a Section 88B Instrument under the Conveyancing Act, 1919. Council is to be nominated as the only authority permitted to release, vary or modify any easements, encroachments, rights of way, restriction as to user or positive covenants;
 - i) A graffiti management plan for the removal of graffiti and similar vandalism within seven (7) days of its occurrence and surface re-instatement;
 - j) The stormwater drainage system (including all pits, pipes, absorption, detention structures, treatment devices, infiltration systems and rainwater tanks) shall be regularly cleaned, maintained and repaired to ensure the efficient operation of the system from time to time and at all times. The system shall be inspected after every rainfall event to remove any blockage, silt, debris, sludge and the like in

the system. All solid and liquid waste that is collected during maintenance shall be disposed of in a manner that complies with the appropriate Environmental Guidelines;

- k) Maintenance of the swimming pool;
- l) Maintenance of required acoustic and wind mitigation measures of Development Consent No. 13/135; and
- m) CCTV surveillance of all public areas within the development site.

CONDITIONS WHICH MUST BE SATISFIED DURING THE ONGOING USE OF THE DEVELOPMENT

- 117. The stormwater drainage system (including all pits, pipes, absorption, detention structures, treatment devices, infiltration systems and rainwater tanks) shall be regularly cleaned, maintained and repaired to ensure the efficient operation of the system from time to time and at all times. The system shall be inspected after every rainfall event to remove any blockage, silt, debris, sludge and the like in the system. All solid and liquid waste that is collected during maintenance shall be disposed of in a manner that complies with the appropriate Environmental Guidelines.
- 118. Vehicles making deliveries (including goods, merchandise and the like) and accessing the site shall comply with the following requirements:
 - a) The maximum size of vehicles making deliveries and accessing to the site shall be limited to Medium Rigid Vehicles (as denoted by the current version of AS/NZS 2890.2) only.
 - b) All loading and unloading of vehicles shall be carried out wholly within the site. No deliveries to the premises shall be made direct from a public places, public streets or any road related areas (eg. footpath, nature strip, road shoulder, road reserve, public car park, service station etc).
- 119. The approved visitor spaces shall be made available to residents, staff and visitors to the site at all times and shall not be allocated to individual units, sold or leased or any other purpose.
- 120. Should the external fabric of the building(s), walls to landscaped areas and like constructions be subject to graffiti or similar vandalism, then within seven (7) days of this occurrence, the graffiti must be removed and the affected surface(s) returned to a condition it was in before defilement.
- 121. The ongoing maintenance of the nature strip shall then be undertaken by the occupier/owner/strata body. Maintenance shall include mowing, watering and maintaining an even coverage of grass at all times. Maintenance does not include pruning, trimming, shaping, or any work to street trees located on the road verge/nature strip at any time the removal of weeds and rubbish and maintaining a good, even coverage of grass at any time.
- 122. The landscape contractor shall be engaged weekly for a minimum period of 52 weeks from final completion of landscaping for maintenance and defects liability, replacing

plants in the event of death, damage, theft or poor performance. After that time monthly maintenance is required.

123. No roller shutters are to be installed to any of the commercial shopfronts that front Gardeners Road.
124. The hours of operation of any future commercial use must be restricted to the hours of 7:00am to 10:00pm Monday to Saturday and 7:00am to 8:00pm Sunday and public holidays.
125. The use of the premises shall not give rise to any of the following when measured or assessed at “sensitive” positions within any other property. These “sensitive” positions should be selected to reflect the typical use of a property (ie any outdoor areas for day and evening but closer to the façade at night time), unless other positions can be shown to be more relevant.
 - a) The operation of all plant and equipment shall not give rise to an equivalent continuous (LAeq) sound pressure level at any point on any residential property greater than 5dB(A) above the existing background LA90 level (in the absence of the noise under consideration).
 - b) The operation of all plant and equipment when assessed on any residential property shall not give rise to a sound pressure level that exceeds LAeq 50dB(A) day time and LAeq 40 dB(A) night time.
 - c) The operation of all plant and equipment when assessed on any neighbouring commercial/industrial premises shall not give rise to a sound pressure level that exceeds LAeq 65dB(A) day time/night time.
 - d) For assessment purposes, the above LAeq sound levels shall be assessed over a period of 10-15 minutes and adjusted in accordance with EPA guidelines for tonality, frequency weighting, impulsive characteristics, fluctuations and temporal content where necessary.
126. Any air conditioning units shall comply with the following requirements:
 - a) Air conditioning units are not to be visible from the street or public place and are not to obscure windows/window frames or architectural features of the dwelling.
 - b) A person must not cause or permit an air conditioner to be used on residential premises in such a manner that it emits noise that can be heard within a habitable room in any other residential premises (regardless of whether any door or window to that room is open):
 - i. Before 8 am or after 10 pm on any Saturday, Sunday or public holiday, or
 - ii. Before 7 am or after 10 pm on any other day.
 - c) The transmission of vibration to any place of different occupancy above the requirements of AS2670, Australian Standard AS2021- 2000: Acoustics, Aircraft Noise Intrusion, Building Siting and Construction. Australian Standard AS2107 2000: Recommended Design Sound levels and Reverberation levels for Building Interiors.

- d) Any air-conditioning unit shall comply with the City of Botany Bay's General Noise Criteria detailed in Condition 120 above.

127.

- a) Each residential dwelling (apartment) is approved as a single dwelling for use and occupation by a single family. They shall not be used for separate residential occupation or as separate residential flats. No plumbing fixtures, fittings, walls shall be deleted or added, doorways enclosed or any other changes made from the approved plans in Condition No. 1 of this Consent without the prior Consent of the Council;
- b) The adaptable apartments approved under this development consent are to remain unaltered at all times; and
- c) The storage areas located within the basement shall be allocated to the relevant residential dwelling in any future subdivision of the site. In addition, any isolated storage areas and other spaces identified by the NSW Police in Condition ~~44~~13, shall be monitored by CCTV cameras at all times. (DA13/135/03)

128. New street trees shall be maintained by the Applicant/Owner/Strata Corporation for 12 months after planting (ie. final hold-point inspection). Maintenance includes watering twice weekly to enable good establishment and sustain adequate growth. There shall be two (2) fertilizer applications using a suitable product for natives applied at manufacturer's recommendations, ongoing weed removal, mulch replenishment (minimum of 2) maintaining a 1 metre wide mulch ring at all times and removal of grass/weeds within the mulch ring. Maintenance does not include trimming or pruning the trees under any circumstances. Formative pruning will be undertaken by Council.

129. The landscaped areas on the property shall be maintained in accordance with the approved landscape documentation and to Council's satisfaction at all times. The automatic drip irrigation system shall be maintained in working order at all times.

130. The applicant being informed that this approval shall be regarded as being otherwise in accordance with the information and particulars set out and described in the Development Application registered in Council's records as Development Application No. 13/135 dated as 2 August 2013 and as further amended by Section 96AA Application No. 13(135).02 and 13(135).03 dated as 9 April 2015 and 3 September 2015 and 13/135/04 dated as 22 June 2016 and 13/135/05 dated as 16 November 2016 and 13/135/06 dated as 19 April 2017 **and as further amended by DA-13/1335/07 dated on 21 December 2017** and that any alteration, variation or extension to the use, for which approval has been given, would require further Approval from Council.
